

**DEVELOPMENT PLAN FOR TEMPLE TOWN – A CASE OF  
GURUVAYUR MUNICIPALITY AREA**

THESIS REPORT

Submitted by

**Sherwyn Zeniyadh (TKM19MUP011)**

**MUP (2019-2022) BATCH**

*To*

*The APJ ABDUL KALAM Technological University in partial fulfilment*

*of the requirement for the award of the*

*Post Graduate Degree of M.Planning in*

*Urban Planning*



**URBAN PLANNING**

**DEPARTMENT OF ARCHITECTURE**

**THANGAL KUNJU MUSALIAR COLLEGE OF ENGINEERING**

Karicode, Quilon 691005.

**AUGUST 2022**





**DEPARTMENT OF ARCHITECTURE**  
**THANGAL KUNJU MUSALIAR COLLEGE OF ENGINEERING**



**CERTIFICATE**

Certified that the thesis report entitled “**DEVELOPMENT PLAN FOR TEMPLE TOWN – A CASE OF GURUVAYUR MUNICIPALITY AREA**” submitted by **Sherwyn Zeniyadh (TKM19MUP011)**, MUP (2019-2022) BATCH, in partial fulfilment of the requirements for the award of Post-Graduate Degree in Urban Planning, under the Abdul Kalam Technical University is a bonafide work carried out by them under my guidance and supervision.

**THESIS GUIDE**

**Rahana Abu backer Kovoore**

Professor

Department of Architecture

TKMCE

**HEAD OF THE DEPARTMENT**

**Dr. Annie John**

Department of Architecture

TKMCE

**INTERNAL EXAMINER**

**EXTERNAL EXAMINER**



## **DECLARATION**

We hereby declare that the thesis report entitled “**DEVELOPMENT PLAN FOR TEMPLE TOWN – A CASE OF GURUVAYUR MUNICIPALITY AREA**” is a bonafide record of the study done as part of forth semester internship for M. Plan Post Graduate Degree Course in the Department of Architecture, Thangal Kunju Musaliar College of Engineering, Kollam. To the best of my knowledge, I declare that the work reported herein does not form part of any other project report or dissertation on base with a degree or award conferred earlier to any other candidate.

Place: Kollam

Date: 06/09/2022

**SHERWYN ZENIYADH**

**(TKM19MUP011)**

**MUP (2019 - 2022) Batch**



## **ACKNOWLEDGEMENT**

*It is my privilege to release the feeling of gratitude to several persons who helped directly or indirectly to complete this dissertation work. The success and outcome of this project required a lot of guidance and assistance from many people, and I am incredibly fortunate to have gotten all along completing my dissertation. Whatever I have done is only due to such guidance and assistance, and I will not forget to thank them.*

*I extend my deepest and sincere gratitude to Dr T A Shahul Hameed, Principal of T.K.M College of Engineering, and Dr Annie John., Head of the Department, Architecture, TKMCE, and our Staff Advisor and Dissertation in charge, Dr Annie John, for giving me this opportunity and platform to carry on this research by utilizing the facilities of the college and the department.*

*In all modesty and sincerity, I want to express my sincere appreciation to everyone who has helped me elevate these concepts well above the realm of simplicity and turn them into something solid. Hence, I would like to express my special thanks of gratitude to my thesis guide Dr Annie John who helped me a lot in gathering different information, collecting data, cordial support, valuable information, and guidance, which helped me in completing this task through various stages making this thesis unique and a platform to learn, despite their busy schedules. I would also like to thank Prof. Nizar S.A, Dr Sumam Panjikaran A., Prof. Ann Maria Joseph, Prof. Anjana Murali and Prof. Rahna Abubaker Kovoov for spending the time for us and guiding us during reviews on the inclusions that could be made to enhance the outcome of the project. Last but not least, I would like to express my gratitude to my friends and respondents for their support and willingness to spend some time with me.*

Date: 06/09/2022

**Sherwyn Zeniyadh**

**(TKM19MUP011)**

**MUP (2019 - 2022) Batch**

## Contents

CHAPTER 1	INTRODUCTION.....	1
1.1	TEMPLE TOWN.....	1
1.2	NEED FOR STUDY.....	1
1.3	AIM.....	1
1.4	OBJECTIVES.....	2
1.5	METHODOLOGY.....	3
1.6	SCOPE.....	3
1.7	LIMITATION.....	4
CHAPTER 2	LITERATURE REVIEW.....	5
2.1	LITERATURE REVIEW 1 : Urban Design and Spatial layout of Temple and Temple Towns of Tamilnadu-India.....	5
2.1.1	<b>Background</b> .....	5
2.1.2	<b>Spatial Configuration of the Temple Town</b> .....	5
2.1.3	<b>Spatial Organisation of the Town With Reference to the Temple</b> .....	6
2.1.4	<b>Application of traditional principles in the present context</b> .....	6
2.1.5	<b>Conclusion</b> .....	7
2.2	LITERATURE REVIEW 2 : TEMPLES: THE ROOTS OF URBANISATION	7
2.2.1	<b>Introduction</b> .....	7
2.2.2	<b>Formation of Urban Layout and Settlements</b> .....	7
2.2.3	<b>Economies around temples</b> .....	8
2.2.4	<b>Tourism industry</b> .....	9
2.3	SPECIAL SCHEME 1 : Heritage City Development and Augmentation Yojana (HRIDAY).....	9
2.4	SPECIAL SCHEME 2 :Pilgrimage Rejuvenation And Spiritual Augmentation Drive (PRASAD).....	10

CHAPTER 3	REGIONAL SETTING .....	11
3.1	INTRODUCTION .....	11
3.2	CONNECTIVITY .....	12
3.3	DEMOGRAPHY .....	12
<b>3.3.1</b>	<b>Population.....</b>	<b>12</b>
<b>3.3.2</b>	<b>Literacy.....</b>	<b>13</b>
3.4	OCCUPATIONAL STRUCTURE.....	14
3.5	HISTORY .....	14
<b>3.5.1</b>	<b>The myth.....</b>	<b>14</b>
<b>3.5.2</b>	<b>History time line of guruvayur municipality.....</b>	<b>15</b>
3.6	DEVELOPMENT PHASES OF GURUVAYUR MUNICIPALITY .....	16
CHAPTER 4	STUDY AREA DELINEATION & BASE MAP.....	19
4.1	DELINEATION .....	19
4.2	FRAME WORK .....	19
4.3	DELINEATED AREA.....	20
CHAPTER 5	ZONING REGULATOIN OF DELINEATED AREA.....	21
5.1	INTRODUCTION .....	21
<b>5.1.1</b>	<b>Uses permitted.....</b>	<b>21</b>
<b>5.1.2</b>	<b>Restricted uses.....</b>	<b>21</b>
<b>5.1.3</b>	<b>Uses prohibited.....</b>	<b>21</b>
5.2	ZONING.....	22
<b>5.2.1</b>	<b>Urban Activity zone .....</b>	<b>22</b>
<b>5.2.2</b>	<b>Residential zones .....</b>	<b>22</b>
5.3	ZONING REGULATION.....	23
<b>5.3.1</b>	<b>Zone 1 : Religious activity zone .....</b>	<b>23</b>
<b>5.3.2</b>	<b>Zone 2 : Pilgrim activity zone .....</b>	<b>24</b>

<b>5.3.3 Zone 3 - Urban activity zone .....</b>	<b>25</b>
CHAPTER 6    DEMOGRAPHY .....	29
6.1    INTRODUCTION .....	29
6.2    POPULATION DENSITY .....	29
<b>6.2.1 Population Growth From 1981 – 2011.....</b>	<b>31</b>
CHAPTER 7    HOUSING.....	33
7.1    HOUSING ANALYSIS .....	33
CHAPTER 8    LAND USE .....	37
8.1    LAND USE ANALYSIS.....	37
8.2    WARD WISE MAJOR LAND USE ANALYSIS.....	39
<b>8.2.1 Residential land use.....</b>	<b>39</b>
<b>8.2.2 Commercial land use.....</b>	<b>39</b>
<b>8.2.3 Public &amp; semi public land use.....</b>	<b>40</b>
CHAPTER 9    TRAFFIC & TRANSPORTATION.....	43
9.1    INTRODUCTION .....	43
9.2    MAJOR LINKAGES .....	43
9.3    PUBLIC TRANSPORT MOVEMENT .....	44
9.4    PARKING .....	45
9.5    MAJOR STREET PARKING LOCATION NEAR TEMPLR REGION.....	46
9.6    INFERENCE .....	47
CHAPTER 10    TOURISM .....	49
10.1    INTRODUCTION .....	49
10.2    MAJOR TOURIST PLACES.....	49
<b>10.2.1 Guruvayur Sree Krishna Temple.....</b>	<b>49</b>
<b>10.2.2 Sree Chamundeswari Temple.....</b>	<b>50</b>
<b>10.2.3 Mammiyur Mahadeva Temple.....</b>	<b>50</b>

10.2.4	Statue Of Maraprabhu & Guruvayu .....	50
10.2.5	Thiru Venkatapathy Temple .....	51
10.2.6	Sree Parthasarthy Temple .....	51
10.2.7	Devasam Museum .....	52
10.2.8	Institute Of Mural Painting.....	52
10.2.9	Iskon Centre.....	52
10.3	MAJOR FESTIVALS IN GURUVAYUR TEMPLE TOWN.....	53
10.3.1	Ulsavam.....	54
10.3.2	Vishu.....	54
10.3.3	Ashtami Rohini .....	55
10.3.4	Ekadasi.....	55
10.3.5	Other Major Festival .....	56
10.4	INFERNCE .....	56
CHAPTER 11	PHYSICAL INFRASTRUCTURE.....	57
11.1	WATER SUPPLY .....	57
11.2	WATER BODIES .....	59
11.3	MAJOR THREATS & ENVIRONMENTAL SENSITIVITY OF GURUVAYUR MUNICIPALITY AREA.....	60
11.4	INFERENCE.....	61
CHAPTER 12	SOCIAL INFRASTRUCTURE .....	63
12.1	MAJOR EDUCATIONAL INSTITUTIONS.....	63
12.2	MAJOR HEALTH INSTITUTIONS .....	64
12.3	MAJOR RELIGIOUS INSTITUTIONS .....	65
12.4	MAJOR CIVIC INSTITUTIONS .....	66
12.5	MAJOR RECRESTION INSTITUTIONS.....	67
12.6	INFERENCE.....	67

CHAPTER 13	CASE STUDY .....	69
13.1	INTRODUCTION .....	69
13.2	PURI KONARK DEVELOPMENT AUTHORITY .....	69
13.3	PURI KONARK DEVELOPMENT AUTHORITY .....	70
13.4	HERITAGE & CONSERVATION .....	70
13.4.1	<b>Tangible heritage.....</b>	<b>71</b>
13.5	ZONING AND ASSESSMENT OF HERITAGE STRUCTURE .....	72
13.5.1	<b>Zone-II : Zone-I : The Grand Road .....</b>	<b>72</b>
13.5.2	<b>Zone-II : The Grand Road.....</b>	<b>73</b>
13.5.3	<b>Zone-III : Temple Precinct .....</b>	<b>73</b>
13.6	MAJOR TOURIST DESTINATION IN AND AROUND PKDA REGION. 74	
13.7	INFERENCE .....	75
CHAPTER 14	ANALYSIS .....	77
14.1	DEMOGRAPHY ANALYSIS .....	77
14.2	HOUSE HOLD.....	77
14.3	LANDUSE ANALYSIS .....	77
14.4	TORISM ANALYSIS.....	78
14.5	INFRASTRUCTURE ANALYSIS .....	78
14.6	TRAFFIC AND TRANSPORTATION ANALYSIS.....	78
CHAPTER 15	SWOT ANALYSIS.....	79
15.1	STRENGHT .....	79
15.2	WEAKNESSES.....	79
15.3	OPPORTUNITIES .....	79
15.4	THREATS.....	80
CHAPTER 16	VISION MISSION & GOALS .....	81
16.1	VISION .....	81

16.2	MISSION .....	81
16.3	GOALS .....	81
CHAPTER 17	PROPOSALS .....	83
17.1	PROPOSAL 1: ADAPTIVE TRAFFIC SOLUTION .....	83
17.1.1	<b>IDENTIFIED ISSUES</b> .....	Error! Bookmark not defined.
17.1.2	<b>PROPOSED SOLUTION</b> .....	Error! Bookmark not defined.
17.2	PROPOSAL 2: TRANSIT ROUTES .....	83
CHAPTER 18	CONCLUSION .....	83
CHAPTER 19	REFERENCES .....	89

**LIST OF FIGURES**

Fig 3. 1 Guruvayur Municipality Map .....	11
Fig 3. 2 Guruvayur Municipality Connectivity Map&Fig 3. 3 Guruvayur Municipality Connectivity Map.....	12
Fig 3. 4 Graph Showing Guruvayur Municipality Population Growth Analysis& .....	13
Fig 3. 5 Graph Showing Guruvayur Municipality Population Population Categories.....	13
Fig 3. 6 graph showing comparison of guruvayur Mun. With district literacy rate 2001 and 2011& graph showing comparison of guruvayur Mun. 2001 and 2011 gender literacy rate .....	13
Fig 3. 7 graph showing comparison of guruvayur Mun.with district and state work fore rate 2001 and 2011 & graph showing guruvayur mun. 2011 work Force rate .....	14
Fig 3. 8 Development plan Of Guruvayur 1982 .....	17
Fig4. 1 Map showing Delineated Area of Guruvayure Municipality Area .....	20
Fig5. 1 Zone 1 – Religious activity zone, Fig5. 2 Zone 2 – Pilgrim activity zone .....	27
Fig5. 3 Zone 3 –urban activity zone.....	27
Fig6. 1 Map showing ward wise population of Guruvayur Municipality Area.....	31
Fig6. 2 Graph Showing Guruvayur Municipality Population Growth Analysis & Population Categories. ....	31
Fig. 7. 1 Map showing ward wise House Hold Size of Guruvayur Municipality Area .....	35
Fig 8. 1 Graph Showing Land use split of Guruvayur Municipality Area .....	37

Fig 8. 2 Map showing Land Use of Guruvayur Municipality Area.....	38
Fig 8. 3 Map showing Residential Land Use of Guruvayur Municipality Area.....	39
Fig 8. 4 Map showing Commercial Land Use of Guruvayur Municipality Area.....	40
Fig 8. 5 Map showing Public & semi public Land Use of Guruvayur Municipality Area .....	41
Fig 9. 1 Map showing Major Linkages of of Guruvayur Municipality Area.....	44
Fig 9. 2 Map showing Public Transport Movement of Guruvayur Municipality Area .....	44
Fig 9. 3 Map showing Public Parking Locations of Guruvayur Municipality Area.....	45
Fig 9. 4 Map showing Public Parking Locations of Guruvayur Municipality Area.....	46
Fig 9. 5 Map showing Street Parking Locations of Guruvayur Municipality Area.....	47
Fig 10. 1 & Fig 10. 2 Guruvayur Sree Krishna Temple.....	49
Fig 10. 3 Sree Chamundeswari Temple & Fig 10. 4 Mammiyur Mahadeva Temple .....	50
Fig 10. 5 Statue Of Maraprabhu & Guruvayur Kesavan & Fig 10. 6 Thiru Venkatapathy Temple.....	51
Fig 10. 7 Sree Parthasarthy Temple & Fig 10. 8 Devsaam Museum.....	51
Fig 10. 9 Institute of Mural Painting & Fig 10. 10 Iskon Centre.....	52
Fig 10. 11 Map showing Major tourist spots in Guruvayur Municipality Area.....	53
Fig 10. 12 Ulsavam & Fig 10. 13 Vishu .....	54
Fig 10. 14 Ashtami Rohini .....	55
Fig 10. 15 Ekadasi.....	56
Fig 11. 1 Major Water Supply of Guruvayur Municipality Area.....	57
Fig 11. 2 Map showing variation of water quality in Guruvayur Municipality Area.....	58

Fig 11. 3 Current drainage situvation Guruvayur municipality Area which is badly effected .....	59
Fig 12. 1Map showing major educational institutions in Guruvayur Municipality Area	63
Fig 12. 2 Map showing major health institutions in Guruvayur Municipality Area.....	64
Fig 12. 3 Map showing major religious institutions in Guruvayur Municipality Area..	65
Fig 12. 4 Map showing major civic institutions in Guruvayur Municipality Area.....	66
Fig 12. 5 Map showing major recreation institutions in Guruvayur Municipality Area.	67
Fig 13. 1 Puri.....	69
Fig 13. 2 MASTER PLAN .....	70
Fig 13. 3 Zone I,II,III .....	72
Fig 13. 4 Zone 1 & 2 .....	73
Fig 13. 5 Zone 3 .....	74
Fig 17. 1 Proposal for waste bin check point.....	83
Fig 17. 2Multi –Level Car parking .....	84
Fig 17. 3 E- toilet .....	85
Fig 17. 4 Walkability.....	86



**LIST OF TABLES**

Table 5. 1 Zoning regulation in Zone 1 : Religious Activity zone .....	23
Table 5. 2 Zoning regulation in Zone 2: Pilgrim activity zone.....	25
Table 5. 3 Zoning regulation in Zone 3: urban activity zone .....	26
Table 6. 1 Table showing ward wise population of Guruvayur Municipality Area .....	30
Table 7. 1 Table showing ward wise Housing population of Guruvayur Municipality Area .....	34
Table 11. 1 Major Water Demand of Guruvayur Municipality Area.....	57
Table 14. 1 Table showing comparison on Guruvayur municipality Area with urdpfi standards .....	77



## CHAPTER 1 INTRODUCTION

### 1.1 TEMPLE TOWN

Temple town area the town that are developed due to the orientation of temples and the morphological growth happened due to the temple located in the area.

Temple Towns serve as a string of continuity that connects the various aspects of the spatial organisation and functionality of the spaces. They are designed to meet the needs, demands, and aspirations of the society. The architectural environment is more strongly influenced by the metaphysical interpretation of the spaces. The essential framework of TEMPLE TOWN is formed by structures that were constructed under the guidance of social standards and festival events..

### 1.2 NEED FOR STUDY

The Development of Temple Town in Urban area requires adequate solution to address the problem , the problem including the carrying capacity of the region, Development phase of Social and Physical infrastructure including sanitation development , traffic and transportation facility and other mobility overall urban environment and the quality of life of its people. The project also catches to the tourism promotion activities which have very good scope in Guruvayur and which could be greatly complimentary.

Traditional building materials and traditional skill linked with it as a product, to which the local residents of the town itself are the consumers, are also helped by the study in industrial and commercial operations and to develop the Temple Town region. However, in order for them to take on such a role, there must be significant awareness generation. Activities that promote tourism also have a very good scope.

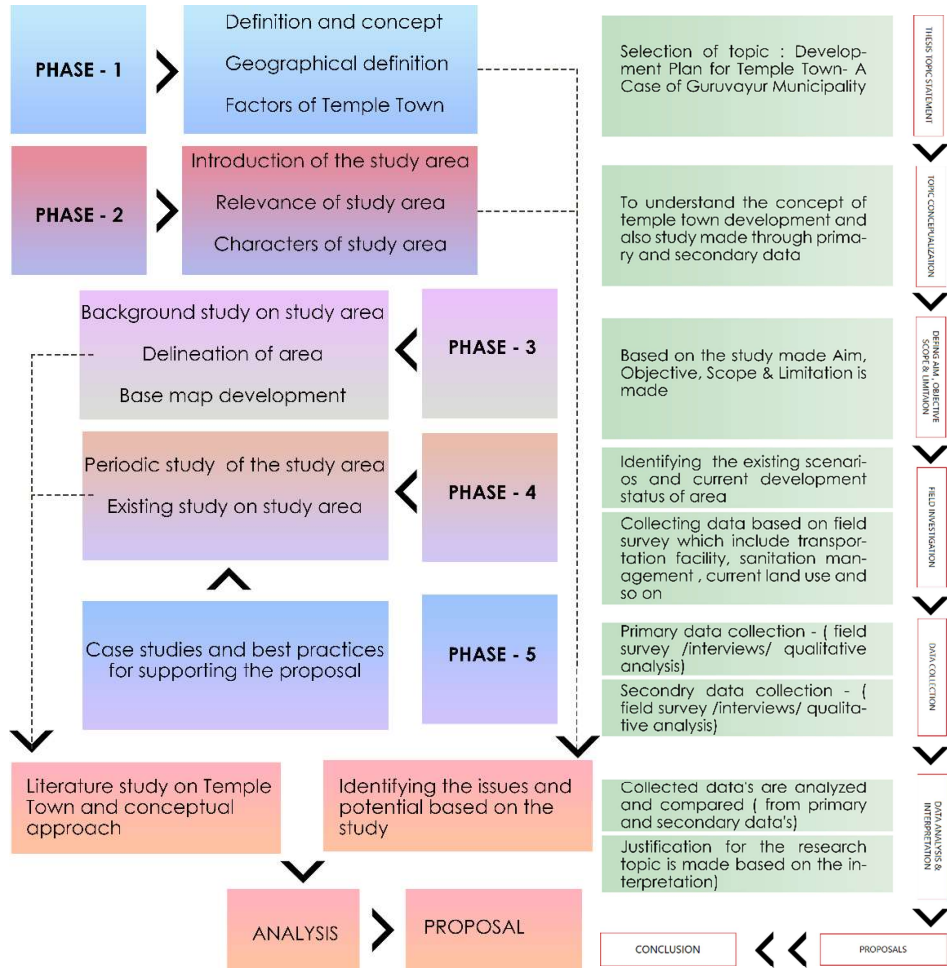
### 1.3 AIM

TO EVOLVE THE DEVELOPMENT PLAN FOR GURUVAYUR MUNICIPALITY AS TEMPLE TOWN.

## 1.4 OBJECTIVES

- To study the historical importance and planning settlement of the Region .
- To identify the key indicators that shapes the city , with reference to the history and conservation.
- To shapes the role of tourism and other cultural activities promoting to tourism industry in Guruvayur.
- To identify the challenges for planning the future development of Temple Town.
- To propose the solution for better traffic and transportation for the temple town.
- To propose the solution for better sanitation facility for the temple town.
- To propose the solution for better infrastructure development for the temple town

### 1.5 METHODOLOGY



### 1.6 SCOPE

The study will help to identify the existing condition of Temple town ,which helps in improving the characteristics of Temple Town by the schemes and regulation by enhancing the culture and identity of the area .

## 1.7 LIMITATION

- The study is limited to the development phases of temple town rather no to the temple premises.
- Study focusing on the development of infrastructure development of the Temple Town rather not examine the rituals of the temple.

## CHAPTER 2 LITERATURE REVIEW

### 2.1 LITERATURE REVIEW 1 : Urban Design and Spatial layout of Temple and Temple Towns of Tamilnadu-India

The study of industrial and commercial operations and the development of the Temple Town region also aid traditional building materials and the traditional skill associated with it as a product, of which the local population of the town itself are the consumers. However, there must be tremendous awareness generating before they can assume such a role. The spectrum of promotional activities is also extremely impressive..

#### 2.1.1 Background

Urban fabric evolution demonstrates how social, economic, political, and physical factors interact during the process of creating a metropolis. The outcomes of these urban encounters are these urban types. These physical institutions aid in forming the city. Urban elements frequently express themselves through its spatiophysical constituents. Numerous interpretations of city structure have been made based on social, religious, historical, emotional, and philosophical considerations. In the backdrop of India, every traditional town or city has its own distinct dimensions.

#### 2.1.2 Spatial Configuration of the Temple Town

The major temple complex with its thundering Gopuram and vast enclosures, the water bodies—both sacred and profane—residences, the market, and others that make up the fabric of the city are spatial components that are scattered in an orderly way and are well interwoven. These components' placement to create a specific spatial configuration indicates the hierarchy that exists. The temple is located in the centre of the town, the water bodies are in the cardinal directions, the Gopuram is in the cardinal directions, and the city's structure is laid out like a Mandala.

By strategically placing roadways to facilitate celebratory ceremonies and lowering the height of the Gopuram towers, a system of spatial mediation is used to elaborate and perfect this spatial configuration. Ordinarily, holy geometry or the Mandala governs the placement of urban form around the centre and their spatial arrangement. The Mandala, a nuclear diagram with ritual meaning that serves as a blueprint for construction, is the most basic.

On a smaller scale, urban space systems are created in direct response to the functional specifications of processional routes or ritual ceremonies.

### **2.1.3 Spatial Organisation of the Town With Reference to the Temple**

The entire urban framework of the temple town is made up of the temple complex with its enormous Praharam and Gopuram, Sannidhi Street or Approach Street, Mada Streets or Circumambulatory Streets, and the sacred water sources at cardinal directions.

Underlying the construction of this urban fabric is the spatial organisation, which establishes a certain metaphysical language. The following are only a few of these elements' functions: The temple or the Stalam- the Genius Loci, that has the massive enclosures or Praharam and has Gopuram or the high rise towers

- the tank or the Theertham, which is used for religious purifications and is associated with a number of Thepam and other celebrations;
- streets, particularly the processional routes for the Mada Veedhi, which has year-round dynamism through the celebration of the places, including Sannidhi streets, approach streets, and Mada streets..

### **2.1.4 Application of traditional principles in the present context**

A more comprehensive, integrated strategy that considers more aspects of urban planning is required for smart cities. The key to historic planning, with the town as the centre and nourished by the surrounding countryside, is integrating town and country planning and making them more symbiotic. Traditional communities must take a methodical approach to solving the current problems. Two issues must be resolved. One part is valuing its historical legacy, and the next is addressing current challenges. Making a striking equilibrium is the architects' and planners' challenge..

### **2.1.5 Conclusion**

The insensitive and inconsistent approach to urban design for such ancient settlements with a complex society system and values has drawn a great deal of criticism. To advance the intrinsic qualities of these ancient settlements to a degree of perceived smartness, modern urban development initiatives therefore call for a study of historic cities in India to comprehend their conventional planning principles.

## **2.2 LITERATURE REVIEW 2 : TEMPLES: THE ROOTS OF URBANISATION**

### **2.2.1 Introduction**

South India is home to a diverse range of traditions and cultures. A large portion of it is influenced by the ornate past that dates back to the country's period of monarchical control. The noteworthy dynasties that controlled the area, including the Cholas, Pandyas, and Pallavas, were fervent devotees of Hinduism and avid preservers of culture. During their reign, they are known to have built numerous temples as well as supported and promoted the already-existing ones in the area.

Religion played a significant role in the growth of the areas where these temples were located. These temples laid the groundwork for urbanisation by gradually starting to have an impact on the areas geographically surrounding them. They served as the nucleus of the earliest economic structures seen in these areas. Temple towns are places that grew up around temples as its main attraction

. The 12 temple towns in the state hence share similar morphological traits and layouts yet differing in many ways. Even now, signs of the temples' significant impact on the cities around them may still be seen. These towns' economic systems developed through undertaking tasks for which the operation of temples created demand. These activities continue significantly support the economies of these cities.

### **2.2.2 Formation of Urban Layout and Settlements**

Due to the presence of temples in the majority of its cities, Tamil Nadu's cultural heritage and religious heritage have given the state's cities a distinctive layout. The main temple in the city forms the centre of each of the state's 12 temple towns. The temple eventually

serves as the hub around which other economic activity occur. Depending on the level of political and economic relations with the temple, different cities have experienced different effects of the temple's centrality on the city's layout.

The temple eventually serves as the hub around which other economic activity occur. Depending on the level of political and economic relations with the temple, different cities' temple centrality effects on the city's layout have varied.

The fundamental structuring, functioning, and spatial dynamics of cities like Kanchipuram are formed by building forms that are dictated by social standards in combination with celebratory components. Kumbakonam, a city with 180 temples, used the money that its temples got to advance agriculture. In addition, a large number water tanks were constructed in this city, especially for ablution and religious uses..

Madurai's settlement pattern was designed with an antiquated town planning methodology that is focused on caste and occupational hierarchies. The settlement layout of Madurai is depicted on a map in accordance with an antiquated town planning system that is based on caste and occupational hierarchies.

### **2.2.3 Economies around temples**

In a religious nation like India, especially in antiquity, temples served as the hub of social, political, and economic activity.

Temples had a variety of purposes in the economy, including serving as the location for the government's tax collection, managing the nearby local markets that grew prosperous, and creating a significant amount of jobs through building.

The temple is more than just a place for worship; it also acts as a significant hub for the local economies of temple towns. Temples have served as a variety of different economic agents.

#### 2.2.4 Tourism industry

One of India's most lucrative and promising industries is travel and tourism. Foreign exchange production has been greatly aided by the tourism industry. The tourist industry's cultural and heritage tourism sector is expanding at the quickest rate.

In addition, cultural tourism and pilgrimage tourism have both seen significant growth. Services for tourists that require cultural awareness are included in heritage tourism.

When the temples host celebrations, during months that are revered, and for other ritualistic and religious reasons, they draw large numbers of tourists.

The state has about 33,000 old temples, which tends to draw tourists who are devout.

#### 2.3 SPECIAL SCHEME 1 : Heritage City Development and Augmentation Yojana (HRIDAY)

The Government of India's National Heritage City Development and Augmentation Yojana (HRIDAY), a central sector programme, was introduced on January 21, 2015, with the goal of conserving the city's historic character while integrating urban planning, economic development, and heritage conservation.

By investigating many options, including incorporating the business sector, HRIDAY's major goal is to conserve the character of the soul of historic cities and facilitate inclusive heritage-related urban development. The specific goals are: (HRIDAY, 2015)

- The development, planning, and execution of infrastructure that respects cultural heritage.
- As a foundation for urban planning, growth, and the supply and delivery of services, create and record a heritage asset inventory of cities' natural, cultural, living, and built heritage.
- The implementation and improvement of basic service provision, with a particular emphasis on sanitation services such as public restrooms, water faucets, street lighting, and the use of cutting-edge technologies to improve tourist facilities/amenities.
- Increasing local capacity for a diverse industry based on heritage.
- Establish strong connections between tourist attractions, cultural venues, and the preservation of the built and natural environments.

- Adaptive maintenance and restoration of urban history, including the use of modern technologies for retrofitting old buildings.
- Create and oversee a successful public-private cooperation for the rehabilitation of adaptable urban areas.
- creating informed cities through the use of contemporary ICT tools and creating secure cities using contemporary surveillance and security equipment like CCTV etc.
- In order to increase accessibility, both the physical (roads and universal design) and intellectual (digital heritage and GIS mapping of historical locations/tourist maps and itineraries) access must be improved.

#### 2.4 SPECIAL SCHEME 2 :Pilgrimage Rejuvenation And Spiritual Augmentation Drive (PRASAD)

In order to improve the religious tourist experience, the PRASAD (Pilgrimage Rejuvenation and Spiritual Augmentation Drive) programme focuses on locating and improving pilgrimage sites all throughout India. To offer a comprehensive religious tourism experience, it strives to integrate pilgrimage places in a prioritised, organised, and sustainable manner. The expansion of domestic travel is heavily dependent on religious travel.

The Pilgrimage Rejuvenation and Spiritual Augmentation Drive (PRASAD) initiative aims to achieve the following:

- Benefit from the multiplier and direct effects of pilgrimage travel on economic growth and job creation.
- Adhere to the pro-poor tourist ideology and community-based development while creating pilgrimage sites.
- Using tools and resources available to the public.
- Create world-class infrastructure in places of worship to enduringly boost tourism.
- Raise awareness among the local population of the importance of tourism to their quality of life, sources of income, and regional growth in general
- To promote local culture, arts, food, handicrafts, and livelihood in the designated areas.

## CHAPTER 3 REGIONAL SETTING

The Guruvayur municipality is located 99 kilometres south of Kozhikode, 111 kilometres south of Kochi, and 30 kilometres south-west of Thrissur. Guruvayur is directly connected to these cities by broad-gauge railway. And is a well-known centre for temple town in Kerala. The district is close to several significant urban areas, including Kochi, Coimbatore, Thirssur, and Kozhikode.

### 3.1 INTRODUCTION

The focal point and top destination in Guruvayur is the Guruvayurappan Temple. With the deepest faith in their hearts and in Lord Guruvayurappan, millions of devotees visit this shrine every year. The number of devotees attending this temple is gradually rising day by day. Since the previous 50 years, this temple has grown to be very well-known. During festival times, the daily crowd can reach several lakhs. The location of Guruvayur Municipality is 10.5946\*N and 76.0369\*E.

The Guruvayur Municipality oversees and manages civic infrastructure of the city's 43 wards. According to 2011 national census Guruvayur Municipality occupies an area of 29.66 sqkm. The Guruvayur Municipality has a population of 67,006 and the population density is 3,115/km<sup>2</sup>. Guruvayur town has grown as a temple town around the famous temple, of 'Lord Krishna', as its Central point. The area in the immediate vicinity of temple is congested and crowded with ribbon development of commercial and service establishment.

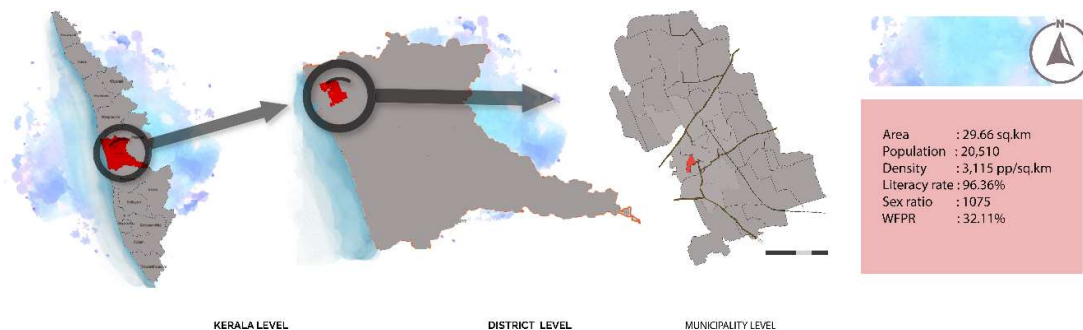


Fig 3. 1 Guruvayur Municipality Map  
Source: Author Generated

### 3.2 CONNECTIVITY

The nearest airport to Thrissur is situated in Kochi and situated at a distance of 75 km. The Kochi International Airport is well connected to several major cities in India as well as Asia and so on. NH 66 and SH 56 & SH 50 and other state hiways and other small roads passing through the proposed site. There are regular bus connecting Guruvayur Municipality. Guruvayur KSRTC Bus Station is situated at a distance 1km and private Bus Station ( private bus station - 1 ) is situated at a distance of 1km f. These bus station inter connect several major cities and other states majorly Tamilnadu and Karnataka. Railway is situated at a distance of 1km . Guruvayur Railway Station is a well connected to several major cities in India majorly souther cities.

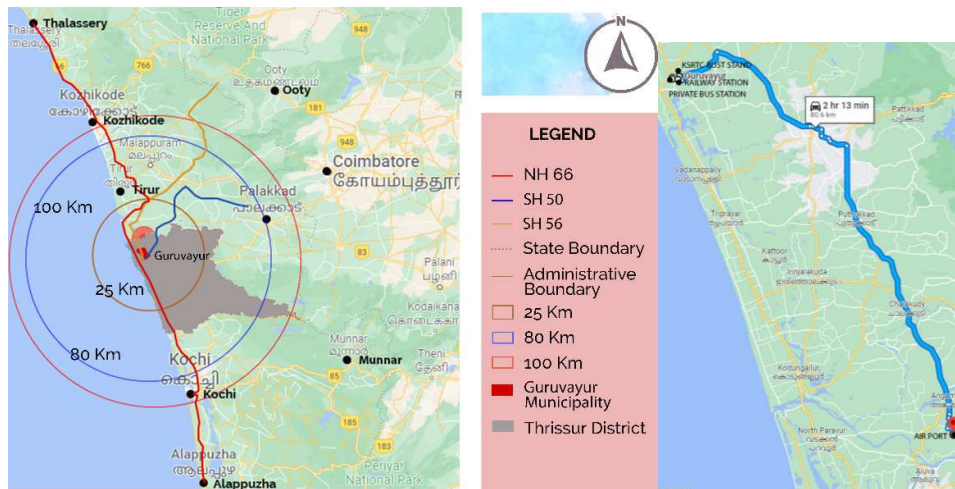


Fig 3. 2 Guruvayur Municipality Connectivity Map&Fig 3. 3 Guruvayur Municipality Connectivity Map

Source: Author Generated from Google

### 3.3 DEMOGRAPHY

#### 3.3.1 Population

As per 2011 census total population of Guruvayur Municipality is 20,510. This is .66 % of the total district population .Population of Thrissur district is 10% of the state . District has only 7.8% of area of the state. As comparing from 1981 to 2011 census ,the census data 2011 shows a negative rate (-3.19% ) of the population due to outer migration. The residential sector has moved to the fringe leading to commercialization of the central core and most of the building.

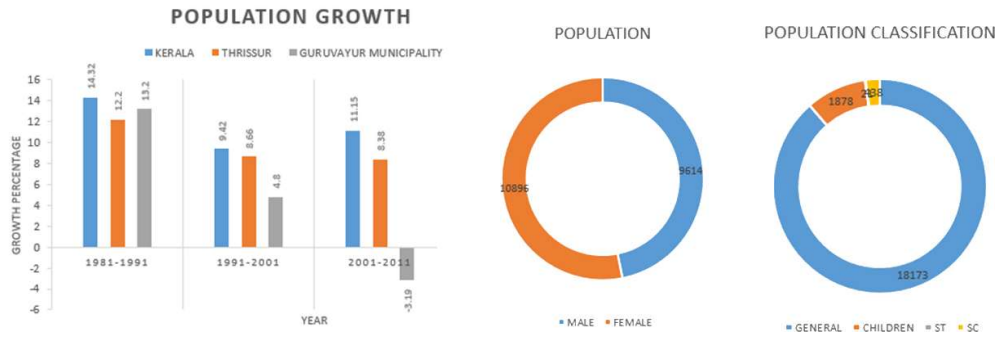


Fig 3. 4 Graph Showing Guruvayur Municipality Population Growth Analysis & Fig 3. 5 Graph Showing Guruvayur Municipality Population Categories.

Source: Census Data 1991/2001/2011

As per 2011 census, Male and Female population were 9,614 and 10,896. The split of population is made based on categories: they are General population, Children (below 6), and SC/ST.

### 3.3.2 Literacy

The comparison on census data of 2001 and 2011 shows an increase in literacy rate. There is an increase of 1.58% from 2001 to 2011 in Guruvayur Municipality.



Fig 3. 6 graph showing comparison of guruvayur Mun. With district literacy rate 2001 and 2011 & graph showing comparison of guruvayur Mun. 2001 and 2011 gender literacy rate  
Source: Generated From Disaster Management 2020-21, Census India 2011 chapter 4, census India 2001 & census India 1991

Literacy rate of male & female in 2001 is 96.35% & 93.21% and literacy rate of male & female in 2011 is 97.01% & 95.79%. comparison shows an increase in literacy rate.

### 3.4 OCCUPATIONAL STRUCTURE

The comparison on census data of 2001, 2011, it shows an increase in percentage in work force. In Kerala context it shows increase of 2.48% from 2001 to 2011. In Thrissur context it shows an increase of 2.95 % from 2001 to 2011. In Guruvayur Municipality context shows an increase of 2.71% from 2001 to 2011. The work force of the corporation is divided into 3 groups, they are primary, secondary and tertiary work force. The primary work force includes agricultural workers and production force etc. The secondary work force includes industrial work force and the tertiary work force includes sales and other service force etc...

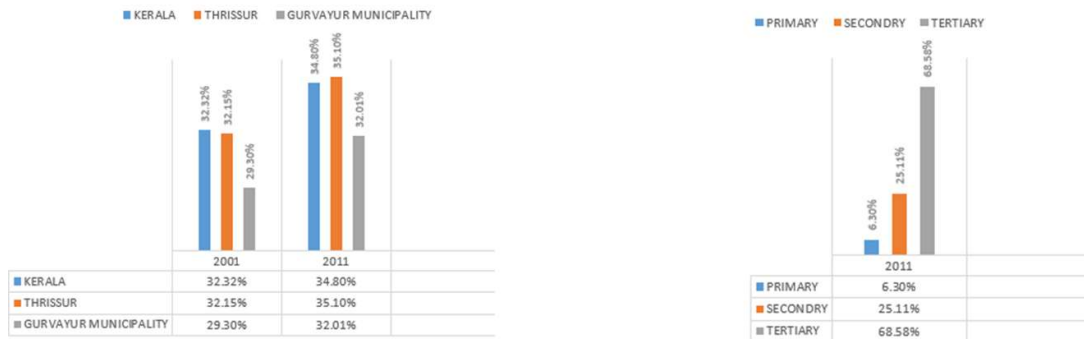


Fig 3. 7 graph showing comparison of guruvayur Mun. with district and state work force rate 2001 and 2011 & graph showing guruvayur mun. 2011 work Force rate  
 Source: Generated From Disaster Management 2020-21, Census India 2011 chapter 4, census India 2001 & census India 1991

The 2011 data shows that the primary work force shows an increase of 6.30%, Secondary work force shows an increase of 25.11%. The tertiary work force shows an increase of 68.58%.

- From the analysis majority of work force are coming under tertiary sector which is mainly constitute of service sector.
- Work force in primary and secondary sector showing a slight decreasing trend compared to tertiary work force.

### 3.5 HISTORY

#### 3.5.1 The myth

Guruvayur Temple is supposed to have been 5,000 years old. it was known as "Bhooloka Vaikunta" (Abode of God on Earth). The term 'Guruvayur' is said to have been derived from two words, 'Guru' (preceptor of the gods) and 'Vayu' (god of winds).

Before leaving his mortal coils, Krishna said his friend Uddhava that in seven days the city of Dwarka would be swallowed by the sea and therefore the idol of Vishnu must be transported to a safer place. The sea invaded Dwarka as Krishna foretold and Uddava carried the idol with the help of Guru (teacher of gods) and Vayu (air god).

While passing over the present site of the temple, they were told that the site was a holy place of exquisite natural beauty since Lord Shiva worshipped Vishnu at this place. They installed the idol at this place and a temple sprang up. The name Guruvayur ensued as Guru and Vayu transported the idol here

Guruvayur temple in history is found in the Tamil literary works of 14th century and later in 16th century. Melpathur's composition called 'Narayaneeyam' made this temple very famous.

### **3.5.2 History time line of guruvayur municipality**

- 1716 AD : The Dutch plundered and set fire to temple
- 1747 AD : The fired Temple was rebuilt
- 1766 AD: Haider Ali captured Calicut and Guruvayur, but spared the temple for a reason of 10000 Ferams which was paid by Vatakkepat Variyar
- 1780 AD : The general insecurity prevailing; the flow of pilgrims and the annual payment of tenants ceased. Haider Ali however gave a 'Devadaya' (free gift) to the temple in 1780 AD., on the recommendation of the Governer of Malabar, Srinivasa Rao and thus saved the temple from total extinction. paid by Vatakkepat Variyar.
- 1789 AD : Tipu Sultan, Haider Ali's son and successor descended on the scene to defeat the Zamorin and to convert Hindus to Islam. Fearing destruction of the image, the Mulavighraha (Main deity) was hidden underground and. Tipu set fire to and plundered the temple.
- 1841 : the Govt. of Madras restored the Devadaya appropriated by Tipu Sultan. Slowly & steadily the temple became prosperous. All the portions were rebuilt renovated and ornamented.

- 1875-1900 : the Ullanad Panikars came in and offered their free services to the lord apart from contributing from their family estates.
- 1923 : the Zamorin once again became responsible for the administration of the temple.
- 1931-1932 : A Sathyagraha was launched under the leadership of Kerala Gandhi, i.e., Kelappan, a prominent group leader of Kerala, to secure the entry of untouchables in to the temple.
- 1936 : All this result ,every Hindu is permitted to have a darshan of the Lord outside the sanctum sanctorum (Sree kovil).
- 1965 : Yet the offering of Namaskara sadhya (feast) exclusively to Brahmins in the Uttupura (dining hall) continued. Finally this custom was also sapped. From 1st Jan 1982, the Devaswam itself feeds 500 – 1000 pilgrims, with Prasadam (Prasada Oottu). Devotees too can make an offering of any amount for free feeding.

### 3.6 DEVELOPMENT PHASES OF GURUVAYUR MUNICIPALITY

Development Plan for Guruvayur town 1982 was prepared in 1965 by Regional town planning Office, Kozhikkode and sanctioned by Government as per G.O. Ms 25/76/LA & SWD dated 02/02/1976. It is one of the initial Development plans of the State of Kerala.

The basic objectives of the development plan for Guruvayur Township 1982 were :

- To guide the developmental activities in and around this famous temple so as to enhance the cultural, aesthetic and functional values of this pilgrim centre.
- To enable the functional growth of the urban area in the future through major land
- To ensure that a balanced use of land is secured for the multifarious urban land needs.
- To provide for commercial, civic and administrative centres, that will serve as the focal points of the urban area; and adequate civic amenities and public utilities for the town population as well as the perennial influx of pilgrims.
- To provide for the economic uplift of the resident population by providing sufficient economic opportunities.

- To outline a functional circulation system that will overcome the existing physical barriers and to achieve a smooth flow of traffic, particularly during festival seasons when there is a total choking up of the traffic system.

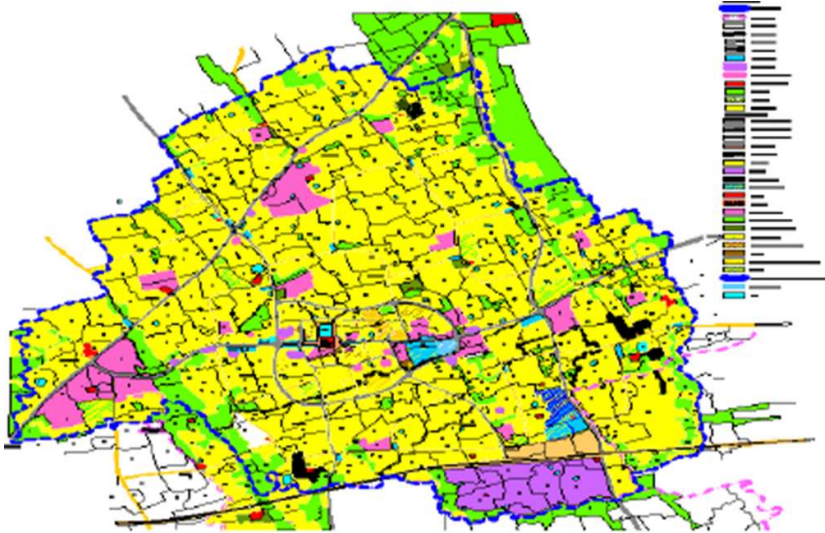


Fig 3. 8 Development plan Of Guruvayur 1982



## CHAPTER 4 STUDY AREA DELINEATION & BASE MAP

### 4.1 DELINEATION

Guruvayur, one of the famous pilgrim centers in the country, has an area of only 7.476 sq km to host more than five crore plus devotees annually. At present there are around 22000 permanent residences. The increase in facilities and amenities with imbalanced manner has created more and more conjunction and deterioration. So it is essential to prepare the development plan scientifically and logically. To provide more space and facilities to the pilgrims as well as residents, a well planned development is to be enforced in this area.

### 4.2 FRAME WORK

The area has been delineated due to the following reasons :

- Being the central area of the city major commercial and transportation nodes of the city are located in the delineated area.
- The city is facing various challengea in terms of traffic due to the inter city and intra city traffic .
- The temple and Old commercial are located in the area which are not developed
- High traffic congestion and inadequate commercial establishment and vendors especially in the city core.

For the delineated area north boundaries are shared by the neighbouring wards- 3 and natural features such as vegetation field, south boundary is shared by ward-32,41 and 43,each boundaries are separated by the existing road network.

The delineated area in studied in terms of :

- Temple area and its existing Characteristics.
- Landuse & Building Characteristics.
- Settlement pattern and their Activity area's.
- Traffic and Transportation.
- Tourism

### 4.3 DELINEATED AREA



Fig4. 1 Map showing Delineated Area of Guruvayure Municipality Area  
 Source: Author Generated From google map & existing Guruvayur Municipalty Map

## CHAPTER 5 ZONING REGULATOIN OF DELINEATED AREA

### 5.1 INTRODUCTION

In order to execute and enforce the recommendations envisioned in the town's development plan, areas have been zoned for a variety of uses, including residential, commercial, industrial, public and semi-public, etc. The accompanying pages provide information on the types of uses that are "permitted," "restricted," and "prohibited" in each zone.

#### 5.1.1 Uses permitted

The "uses permitted" in a zone refer to the uses that are typically allowed in the area.

#### 5.1.2 Restricted uses

In rare circumstances, it might be conceivable to approve some uses that are unlikely to have an impact on the environment or quality in a zone designated for a particular use. Based on their performance qualities and physical locational considerations, such cases must be investigated individually. Such situations are categorised as "Uses restricted" in this category. According to the level of use, restricted uses are again divided into two categories.

- Category focuses on uses that must be regulated by the executive authority with approval from the Town Planner of the Department of Town and Country Planning, which has control over the region.
- This category focuses on the uses that must be regulated by the executive authority with the Chief Town Planner of the Department of Town and Country Planning's approval.

#### 5.1.3 Uses prohibited

Enlists the numerous unacceptable uses in each zone, which are prohibited under normal circumstances. All other uses are prohibited, excluding those that are allowed or restricted.

## 5.2 ZONING

Taking into account the significance given to the practical utilisation of many sites/areas surrounding the temple. Three activity zones are established within the Municipality, including

- Zone 1 is a zone for religious practise.
- Pilgrim activity zone in Zone 2
- Zone 3 is a zone of urban activity.

The accompanying documents also include information on the types of uses that are "Permitted," "Restricted," and "Prohibited" in each land use zone within the various activity zones. The local authority must make sure that different mitigation measures, including suitable drainage measures, are given or enforced when a consent is granted for constructions including the filling of wetland, low lying land, and paddy fields.

### 5.2.1 Urban Activity zone

Land up to a 50-meter depth in the zone of urban activity in areas that are zoned as residential, commercial, public, semi-public, and industrial, along the sides of roadways that are currently or afterwards scheduled to be 21.00 M wide. If one or more of the aforementioned uses are not normally permitted under the zoning regulations, they may be permitted with the Chief Town Planner's approval. However, if the region is considerably developed as a residential zone, such applications might not be allowed there.

### 5.2.2 Residential zones

Residential zones: The zoning rules outlined in the plan must be followed if the area is primarily developed as a residential area. The following extra regulations for hospitals in residential areas shall be in effect.

- The minimum amount of land for hospitals with fewer than 10 beds must be 0.1 hectares, with coverage and F.A.R. restrictions of 30% and 1.0, respectively.
- The minimum amount of land for hospitals with fewer than 50 beds is 0.3 Hectares, with coverage and FAR restrictions of 30% and 1.0, respectively.

### 5.3 ZONING REGULATION

#### 5.3.1 Zone 1 : Religious activity zone

RESIDENTIAL LAND USE	MIXED USE	COMMERCIAL
NIL	Homes up to 200 square metres, Night Shelters, Orphanages, Senior Living Facilities, Dharmasala, Guest Houses and Lodges, Ashrams for Ladies, ATMs, Water Treatment Plants below 5MLD, Daycare Centers and Creches, Swimming Pools, Parks, Playgrounds, Plant Nurseries, Agriculture & Horticulture, Wells & Irrigation Ponds, and Retail Shops up to 100m <sup>2</sup> .	Offices larger than 500 square metres, businesses larger than 200 square metres, restaurants larger than 500 square metres, hotels, motels, central government offices, daycare centres, kindergarten through primary schools, fire stations, exhibition centres and art galleries, religious centres, fairgrounds, and pump houses.
PUBLIC & SEMI PUBLIC	INDUSTRIAL	WATER BODY
Community centre with up to 10 beds, cultural and information centre, hospital, and health facility Libraries and reading rooms, a social welfare centre, a police station, a fire post or station	NIL	Pump houses, Wells and irrigation ponds, water treatment facilities under 5 MLD, and swimming pools

Table 5. 1 Zoning regulation in Zone 1 : Religious Activity zone

Source: Development Plan for Guruvayur Town – 2027

**5.3.2 Zone 2 : Pilgrim activity zone**

RESIDENTIAL LAND USE	MIXED USE	COMMERCIAL
NIL	Old-age homes, a Dharmasala, and orphanages Professional offices over 500 square metres and up to 1000 square metres, banking and financial institutions, Hotels, inns, water treatment facilities with a 5 MLD capacity or more, Infant/Toddler/Primary/School, Civil Defense and Home Guard, Auditorium/Wedding Halls, Gym, Exhibition Center and Art Gallery, Community Hall, Public Utility Buildings, Clinics (Outpatient), Diagnostic Center, Hospitals & Health Center- IP (up to 10beds), Fair Ground, Auto Rickshaw Stand, etc.	Professional offices larger than 1000 square metres, commercial buildings larger than 200 square metres, restaurants larger than 500 square metres, shopping centres larger than 1000 square metres Shopping and office complex, general and head post office for mail delivery, telephone exchange, radio stations, and hospitals
PUBLIC & SEMI PUBLIC	INDUSTRIAL	WATER BODY
Indoor games stadiums, community halls, cultural and information centres, convention centres, outpatient clinics, diagnostic centres, outdoor games stadiums, fair grounds, taxi and jeep stands, auto		Pump houses, Wells and irrigation ponds, water treatment facilities under 5 MLD, and swimming pools

rickshaw stands, pastures and grazing grounds, fodder cultivation, seed farms, pump houses, agricultural produce and seed storage facilities, and green houses.		
---	--	--

Table 5. 2 Zoning regulation in Zone 2: Pilgrim activity zone

Source: Development Plan for Guruvayur Town – 2027

### 5.3.3 Zone 3 - Urban activity zone

RESIDENTIAL LAND USE	MIXED USE	COMMERCIAL
All Houses, Residential Flats/Apartments, Residential Uses Incidental to Other Main Uses, Night Shelters, Orphanages / Old Age Homes / Dharmasala, Residential Quarters, FarmHouses, Ashram / Madams, Non-Nuisance Service Industries, Day Care and Creche, Nursery/ Kindergarten/ Primary School, Tot Lots, Parks. ATMs, eateries/cafés up to 100 square metres,	Old-age homes, a Dharmasala, and orphanages Professional offices over 500 square metres and up to 1000 square metres, banking and financial institutions, Hotels, inns, water treatment facilities with a 5 MLD capacity or more, Nursery/Kindergarten/Primary/School, Civil Defense and Home Guard, Auditorium / Wedding Halls, Gym, Exhibition Center and Art Gallery, Community Hall, Public Utility Buildings, Clinics (Outpatient), Diagnostic	homes with a floor area of up to 300 square metres, residential uses secondary to the primary purpose, Boarding homes and hostels for students and women, A night shelter, an orphanage, an old age home or dharmasala, a guest house or college, a farm house, all retail and wholesale stores, a professional office, a commercial office or establishment, a bank or other financial institution, an ATM, a restaurant or canteen, a bakery and confectionery shop, a theatre, a hotel or hostel, and a beauty salon are examples of a place where people can stay overnight.

	Center, Hospitals & Health Center-IP (up to 10beds), Fair Ground, Auto Rickshaw stand, etc.	
PUBLIC & SEMI PUBLIC	INDUSTRIAL	WATER BODY
Night Shelters, Guest Houses and Lodges, Ashram and Madams ATMs, Swimming Pool, Plant Nursery, Agriculture & Horticulture, Wells and Irrigation Ponds, Water Treatment Plants below 5 MLD, etc.	automobile dealership, auto repair shops, spray painting studios, saw mills, a cold storage facility, an ice factory, service businesses (9 workers + 30HP or 19 workers), Services with a Non-Nuisance Character, Printing Press, Water Treatment Facilities, IT, Hardware/Electronic	Pump houses, Wells and irrigation ponds, water treatment facilities under 5 MLD, and swimming pools

Table 5. 3 Zoning regulation in Zone 3: urban activity zone

Source: Development Plan for Guruvayur Town – 2027

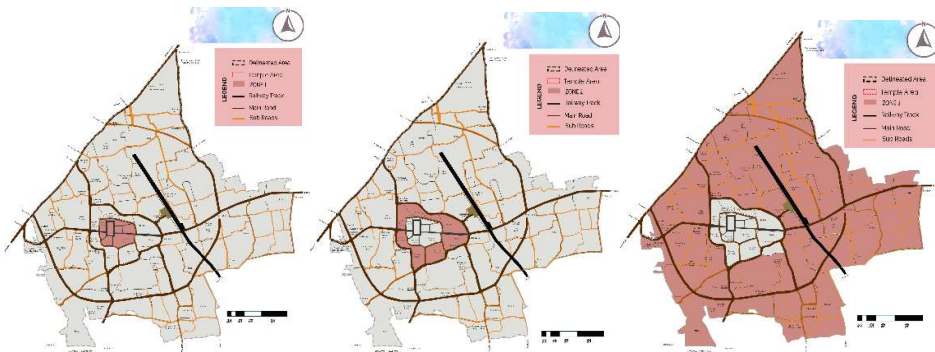


Fig5. 1 Zone 1 – Religious activity zone, Fig5. 2 Zone 2 – Pilgrim activity zone  
Fig5. 3 Zone 3 –urban activity zone.

Source: Development Plan for Guruvayur Town – 2027



## CHAPTER 6 DEMOGRAPHY

### 6.1 INTRODUCTION

Guruvayur has the third rank next to Thrissur Corporation and Chavakkad Municipality of the district in terms of population density. This is the only one town in the District having a separate functional identity other than normal urban activity.

Guruvayur is a monocentric town in the state, in which activities are based on functions of temple and its pilgrimage. The major activities are concentrated along two ring roads and four radial roads towards four directions.

### 6.2 POPULATION DENSITY

The Guruvayur Municipality is one of the densely populated Municipalities of the State. The ward wise gross residential density varies from 2000 persons/Sq. Km. to 5000 persons/Sq. Km.

On analyzing the ward wise gross density, it is seen that the wards just outside the temple premises (Ward 12), ‘Ambalam’ (Ward 18), ‘Sree Krishna H. S.’ (Ward 19) and ‘Mammiyur’(Ward 20) are having more density. The wards lying in the area surrounding the temple and Western part of the Municipality are also having more residential density.

Ward wise population as follows :

Sl No	WARD NAME	POPULATION	WARD AREA(SQ.KM)	POPULATION DENSITY GROSS	POPULATION DENSITY GROSS
1	COLLEGE WARD	1139	0.4650	2449	3245
2	CHOOLPURAM	1233	0.4720	2612	4411
3	KANDANKULAM	1160	0.5140	2144	2691
4	HOUSING BOARD	1110	0.3560	3118	4150

5	THIRUVENKIDAM	760	0.2720	2798	3462
6	QUARTERS	1122	0.4030	2784	3119
7	NENMINI	1214	0.5050	2404	2903
8	KARNAMKODU	1139	0.3340	3410	3854
9	MANIKKATHUPADI	1172	0.4710	2488	2937
10	BUS STAND	853	0.4300	1984	2664
11	MUNICIPAL WARD	803	0.3410	2355	2954
12	SATHRAM	978	0.2410	4058	6380
13	PULIKKAL	1126	0.4390	2565	2716
14	KARAKKAD	1226	0.4620	2654	3419
15	SAMOOHAM	1189	0.3890	3057	4448
16	HIGH SCHOOL	986	0.3300	2988	4180
17	CONVENT	929	0.3450	2698	3261
18	AMBALAM	1014	0.2410	4007	9797
19	SREE KRISHNA H.S	917	0.2200	4168	4949
20	MAMMIYOOR	1116	0.2190	5096	5990

Table 6.1 Table showing ward wise population of Guruvayur Municipality Area  
 Source: Development Plan for Guruvayur Town – 2027

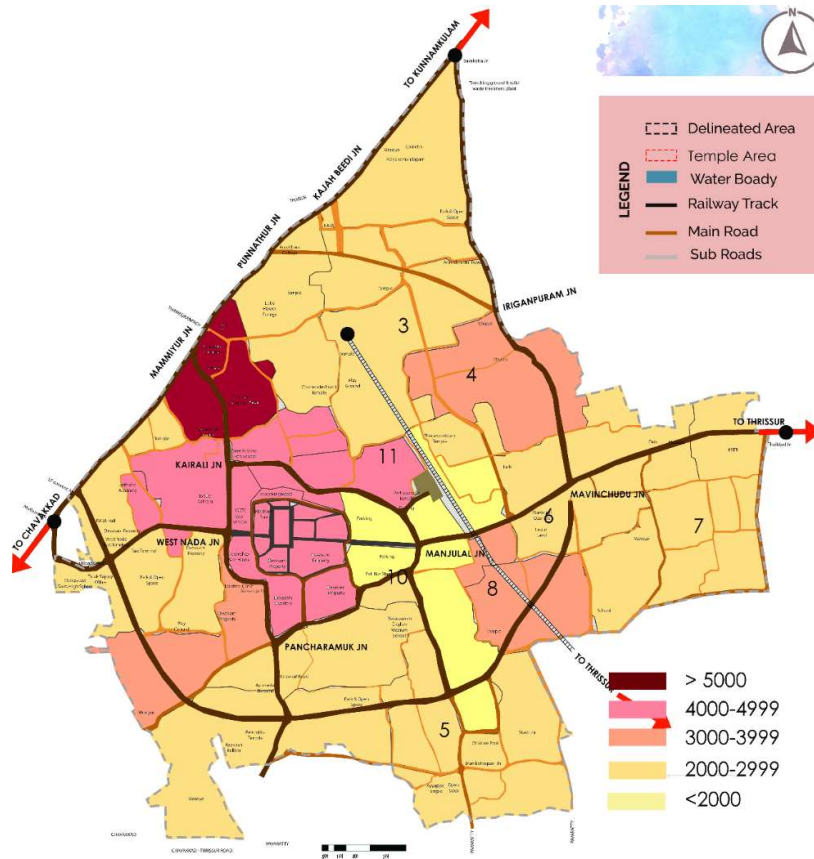


Fig6. 1 Map showing ward wise population of Guruvayur Municipality Area  
 Source: Development Plan for Guruvayur Town – 2027

**6.2.1 Population Growth From 1981 – 2011**

The census data 2011 shows a negative rate (-3.19% ) of the population due to outer migration. The residential sector has moved to the fringe leading to commercialization of the central core and most of the building.

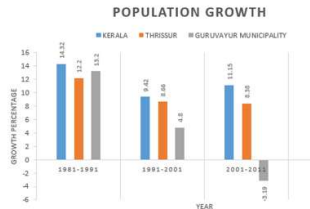


Fig6. 2 Graph Showing Guruvayur Municipality Population Growth Analysis & Population Categories.  
 Source: Census Data 1991/2001/2011

On analyzing the ward wise net density, it is seen that the net density are maximum in ward 18 ‘Ambalam’, Ward 12 ‘Ashram’ and Ward 20 ‘Mammiyur’. The wards surrounding the temple and the ward situated on western side of the temple shows maximum net residential density. The wards in north east and south east side of the municipal area also show minimum net residential density.

## CHAPTER 7 HOUSING

### 7.1 HOUSING ANALYSIS

The average household size is an important indicator of social and housing characteristics of the town. The household size of Kerala State, Thrissur District, Chavakkad Taluk and Guruvayur Town are 4.73, 4.65, 5.04 and 4.72 respectively .

the decadal variation of household size of Guruvayur Municipal Town from 1981 – 2011. The household size of Guruvayur shows a sharp decline from 1991 to 2011 is prevailing in Guruvayur Municipal Town also. This sharp reduction in household size is also reflected in the growth of population during that period. Table showing housing population.

SI No.	WARD NAME	NO. OF HOUSES	NO. OF HOUSEHOLDS	HOUSE HOLD SIZE	HOUSE HOLD DENSITY
1	COLLEGE WARD	221	225	5.06	4.84
2	CHOO LPURAM	262	266	4.64	5.64
3	KANDANKULAM	239	245	4.73	4.53
4	HOUSING BOARD	245	250	4.44	7.02
5	THIRUVENKIDAM	172	175	4.35	6.43
6	QUARTERS	238	240	4.68	5.96
7	NENMINI	258	265	4.58	5.25
8	KARNAMKODU	249	255	4.47	7.63
9	MANIKKATHUPADI	251	255	4.60	5.41

10	BUS STAND	186	190	4.49	4.42
11	MUNICIPAL WARD	178	180	4.46	5.28
12	SATHRAM	163	268	3.65	11.12
13	PULIKKAL	243	245	4.60	5.58
14	KARAKKAD	139	150	8.17	3.25
15	SAMOOHAM	272	280	4.25	7.20
16	HIGH SCHOOL	114	235	4.20	7.12
17	CONVENT	162	166	5.60	4.81
18	AMBALAM	224	230	4.41	9.54
19	SREE KRISHNA H.S	217	220	4.17	10.00
20	MAMMIYOOR	231	235	4.75	10.73

Table 7. 1 Table showing ward wise Housing population of Guruvayur Municipality Area  
*Source: Development Plan for Guruvayur Town – 2027*

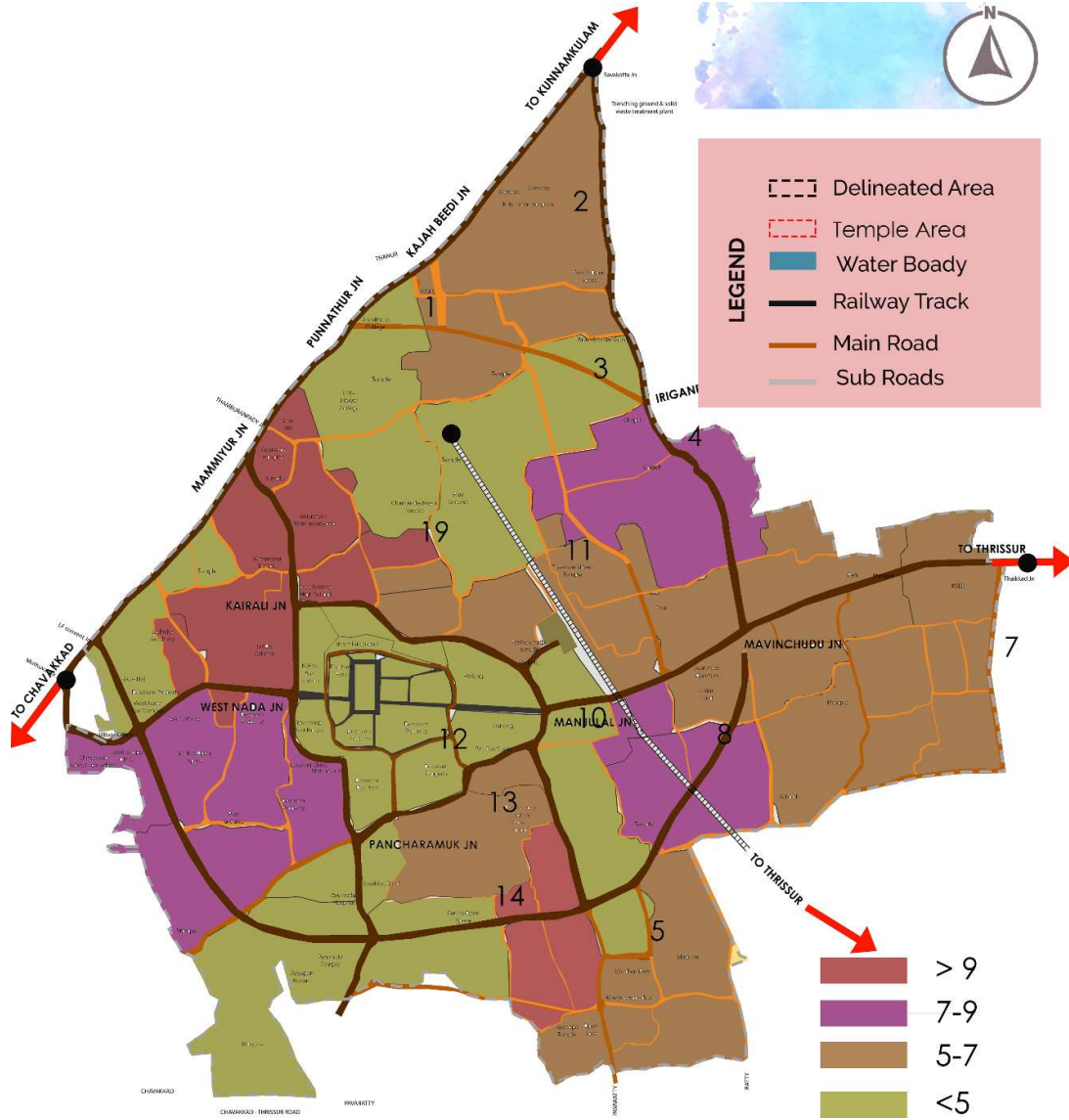


Fig. 7. 1 Map showing ward wise House Hold Size of Guruvayur Municipality Area  
 Source: Development Plan for Guruvayur Town – 2027

the ward wise household size of Guruvayur Town. The household sizes of almost all wards are between 4 and 5 except Convent, College and Sathram wards which shows a household size of 5.60, 5.06 and 3.65 respectively. The Convent and Sathram wards show maximum and minimum Household size.



## CHAPTER 8 LAND USE

When developing an area, the usage of the land is a key factor. The goal of the overall planning process is to preserve or change the land use of the individual parcels of land that make up the area for which planning is intended. The precise portion of the land used for each primary activity (use), such as agriculture, residential, commercial, etc., must be identified in order to comprehend the current situation and make future plans. Understanding the area's primary economic activity as well as the likelihood that there will be land available for future economic activities requires examination of the current landuse. LAND USE ANALYSIS

Based on the landuse analysis , the delineated Guruvayur municipality area is having different landuse split up. The main landuse split are Residential Landuse (56.27%), Mixed Land use (21.34%) , Commercial land use (7.47%), Public & semi public land use (4.25%) Industrial land use (2.27%) , Transportation land use ( 5.14%), Agricultural Land use (0.75%) , Recreation landuse (1.031%), Water body landuse ( 0.108%) and Railway landuse (0.839%).

the major portion of the commercial area is strictly occupied in ward 18 & 13 which are Thekkinkadu & Kokkali . Decongestion core zone area consists of 1.95 % of the total land use.

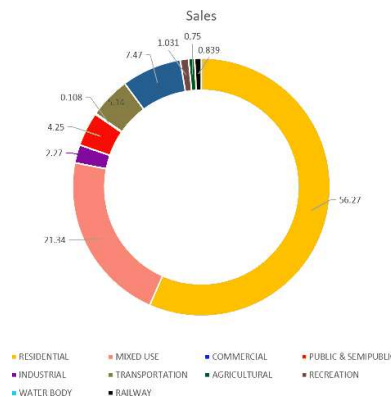


Fig 8. 1 Graph Showing Land use split of Guruvayur Municipality Area  
 Source: : Development Plan for Guruvayur Town – 2027

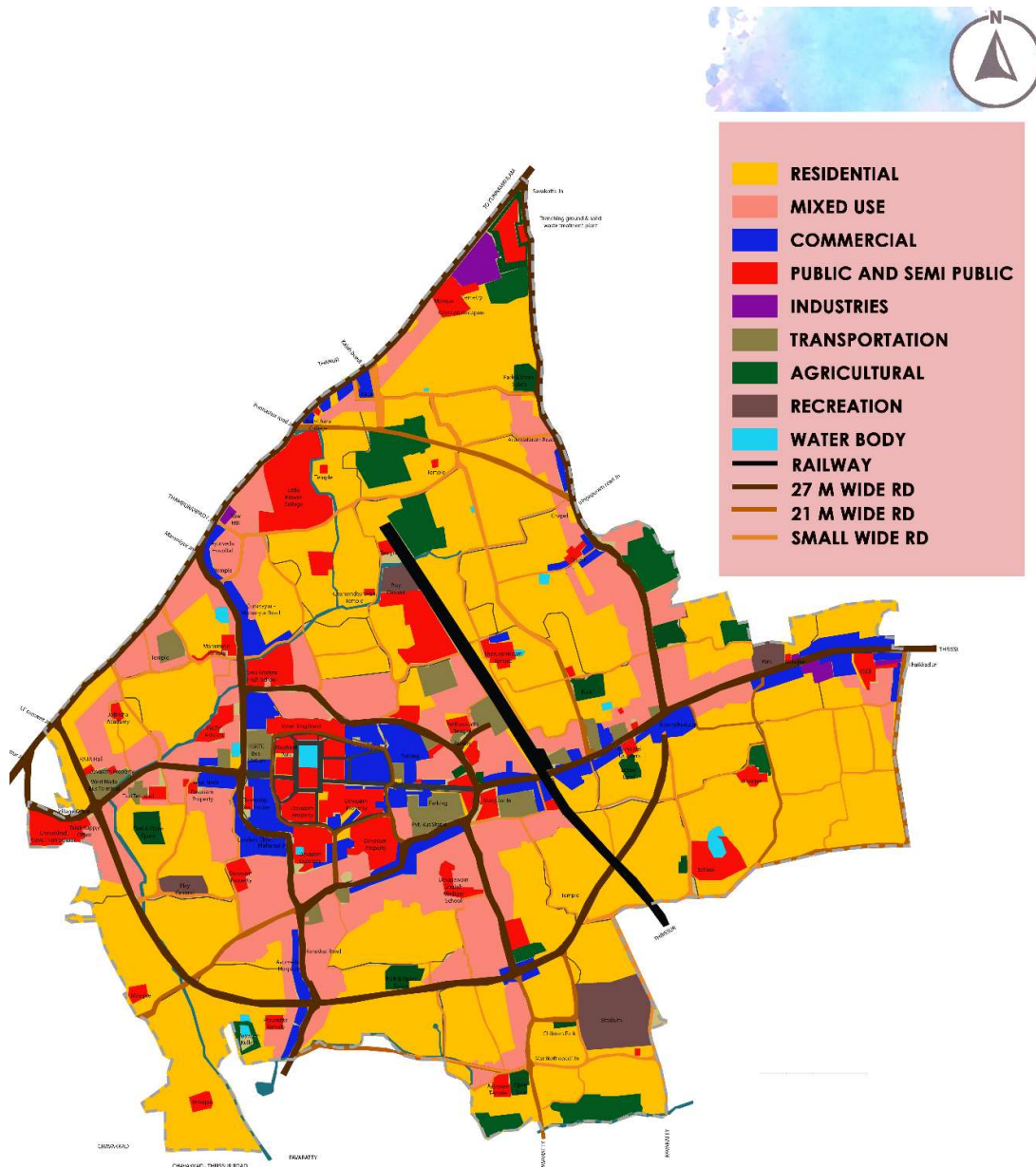


Fig 8. 2 Map showing Land Use of Guruvayur Municipality Area  
 Source: Development Plan for Guruvayur Town – 2027

## 8.1 WARD WISE MAJOR LAND USE ANALYSIS

### 8.1.1 Residential land use

The entire area of the town could be generally classified as residential except for temple and surrounding area, commercial and other uses along major corridors. Even within the temple surroundings, there exist residences and buildings having studio (small) apartments. About 77% of land is classified as residential.

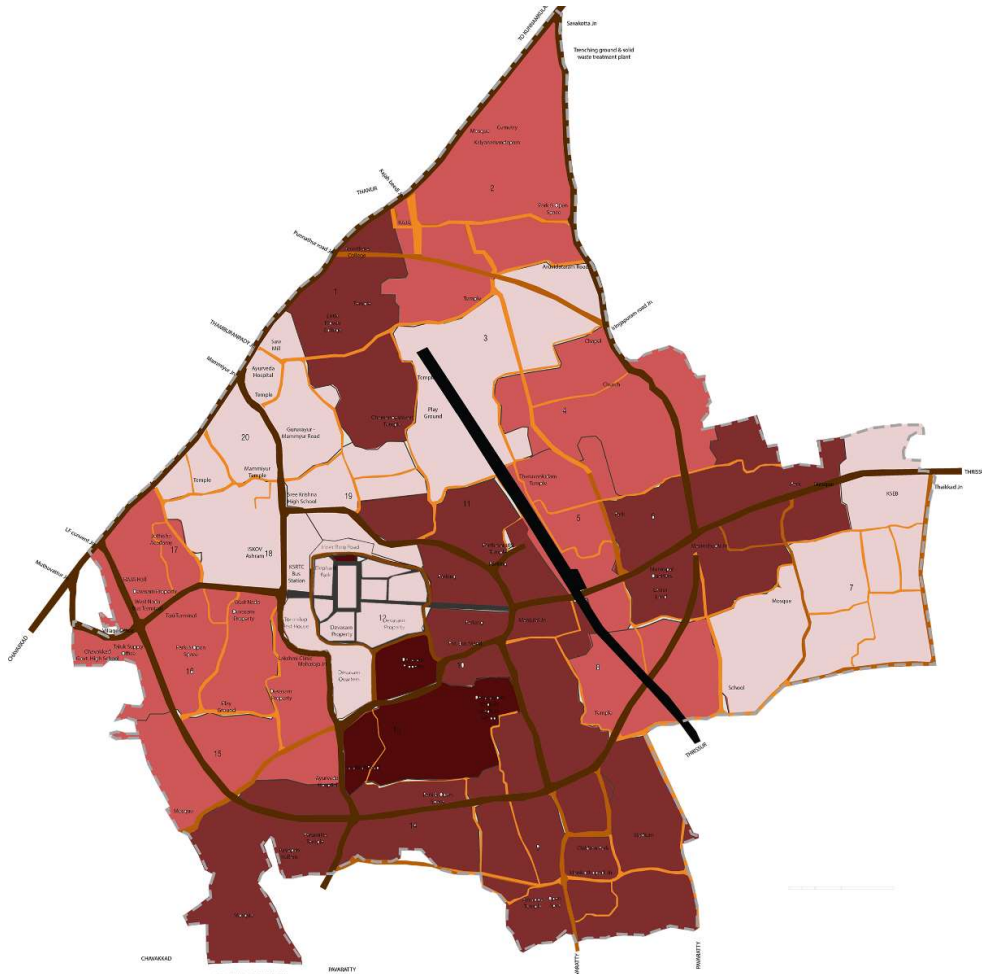


Fig 8. 3 Map showing Residential Land Use of Guruvayur Municipality Area

Source: Development Plan for Guruvayur Town – 2027

### 8.1.2 Commercial land use

About 2.27 % of the total area of Guruvayur Town is under commercial use. Commercial use areas are mainly located around the temple especially in East and West Nadas. Nearly

75% of the commercial institutions are located along and inside the outer ring road. Some scattered commercial institutions are located in major junctions namely Mammiyur junction, Mavinchuvadu junction, Muthuvattur junction, Trenching ground junction, Thaikkad junction etc.

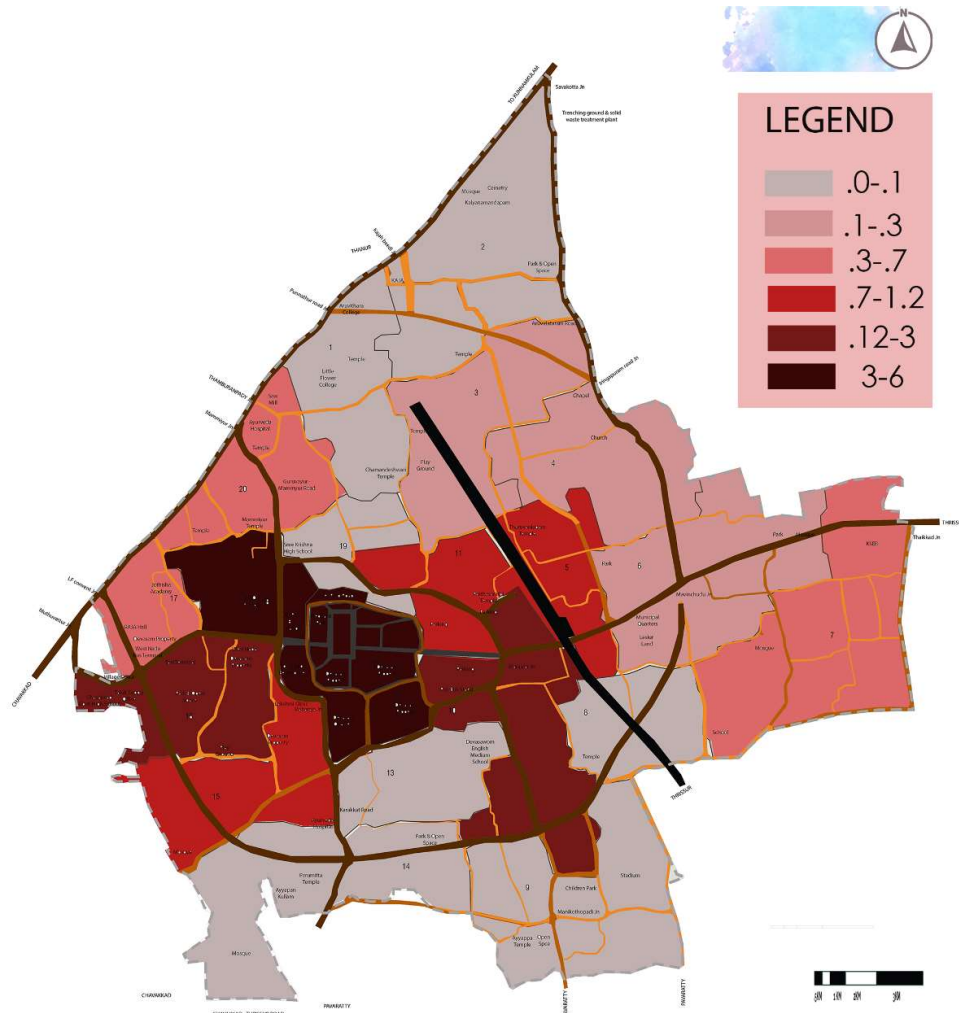


Fig 8. 4 Map showing Commercial Land Use of Guruvayur Municipality Area

Source: Development Plan for Guruvayur Town – 2027

### 8.1.3 Public & semi public land use

The land under public & semi public uses in 2005 comes to 4.25% of the total area. Being a rapidly growing pilgrim Town, 4.25% of the areas under public use will be more compared to other towns of normal urban functions. The residential quarters of Guruvayur Devaswom are not taken in the public & semi public use.

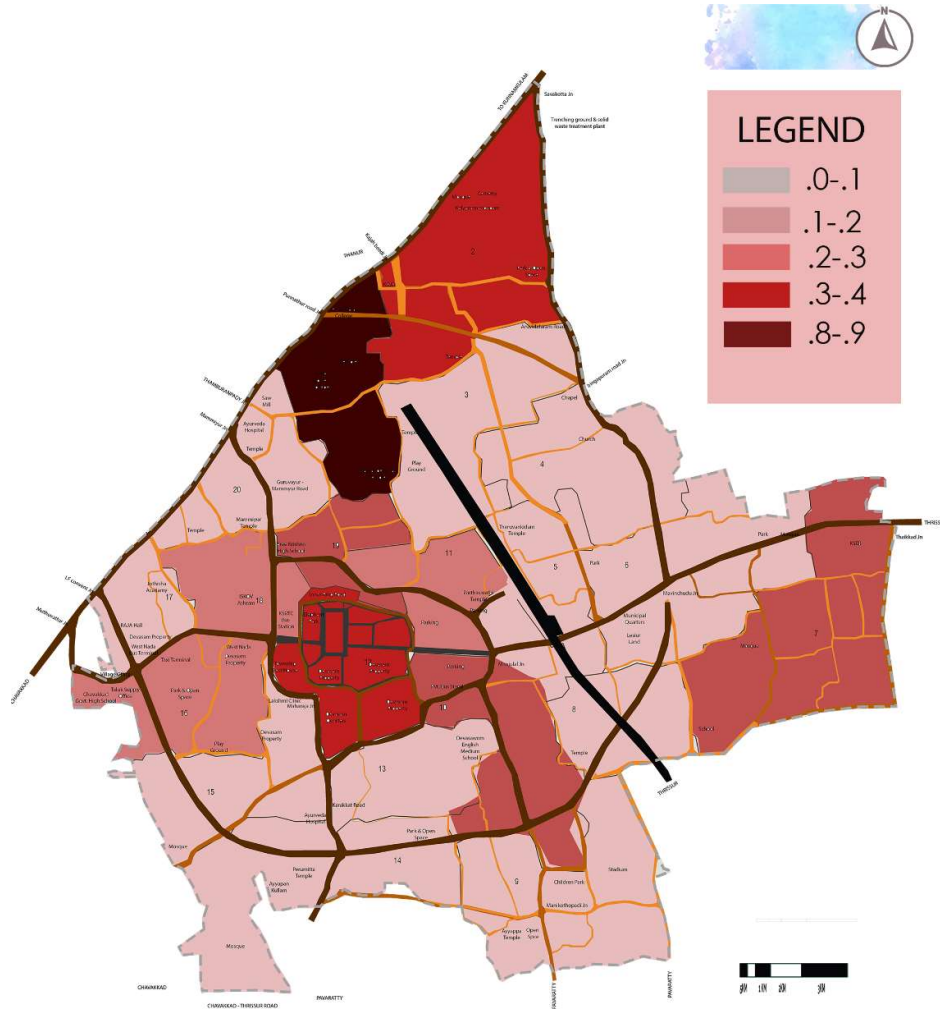


Fig 8. 5 Map showing Public & semi public Land Use of Guruvayur Municipality Area

Source: Development Plan for Guruvayur Town – 2027



## CHAPTER 9 TRAFFIC & TRANSPORTATION

### 9.1 INTRODUCTION

A town's ability to support traffic, transportation, and roads and railroads is essential to its viability. The transportation system performs the same role as the human body's arteries. In contrast to similar municipal towns in Kerala, the temple town's traffic issues are of a distinct character. In the town of Guruvayur temple, it is necessary to manage a sizable number of pilgrims who arrive by various forms of automobiles and public transportation.

### 9.2 MAJOR LINKAGES

Existing road network of Guruvayur Municipal area mainly consists of two ring roads namely Inner ring road and Outer ring road and four important radial roads to four directions which leads to the temple.

The major roads which function as the major linkages to other parts of the District and states are.

- Thrissur road – Which connects the District Head Quarter and to Eastern part of the District and leads to Tamilnadu.
- Guruvayur - Kunnamkulam road – Connects the temple town to Kunnamkulam, one of the major business centers of the District and to the Northern parts of the state.
- Guruvayur - Chavakkad road – Connects the twin town Chavakkad and NH- 17 leading to Southern and coastal areas of state.
- Guruvayur – Chavakkad – Pavaratty road through Pancharamukku connects Southern parts of the District.
- The following stretches of roads also plays important role in developing traffic characteristics of the town.
- Thaikkad – Pavaratty road.
- Mavin Chuvadu – Trenching ground road.
- Trenching ground – Muthuvattur road

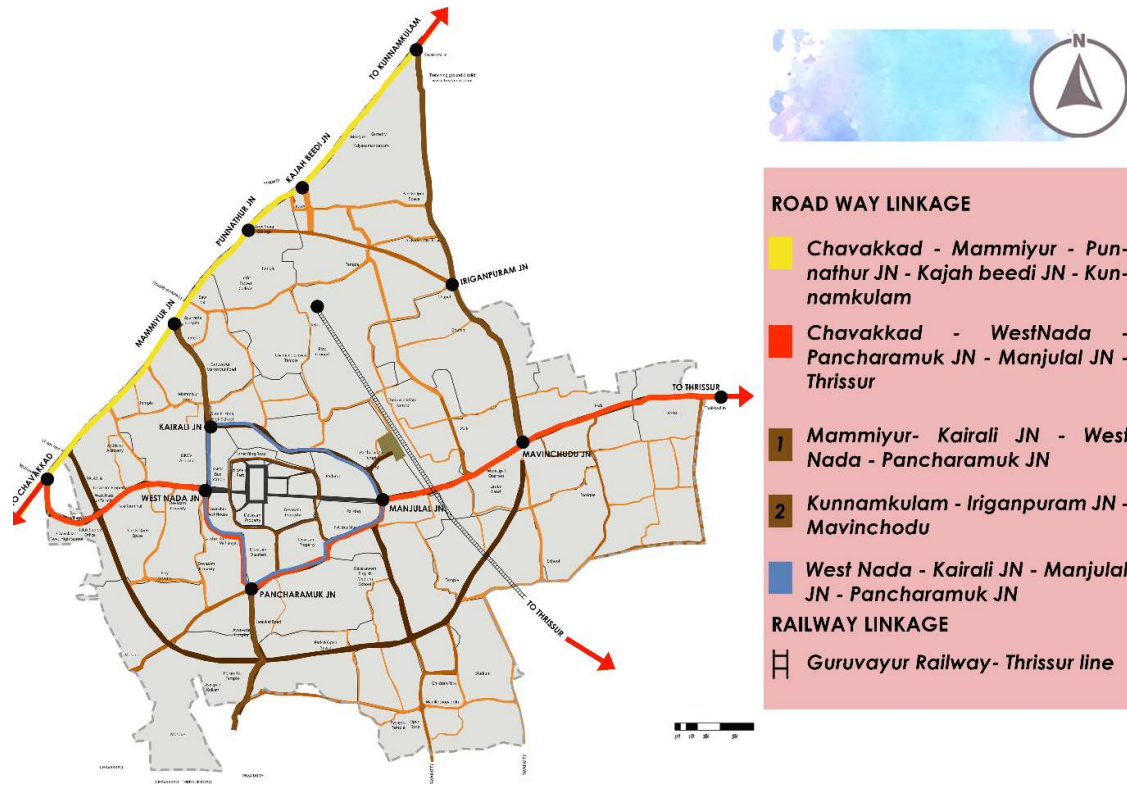


Fig 9. 1 Map showing Major Linkages of of Guruvayur Municipality Area

Source: Development Plan for Guruvayur Town – 2027

### 9.3 PUBLIC TRANSPORT MOVEMENT

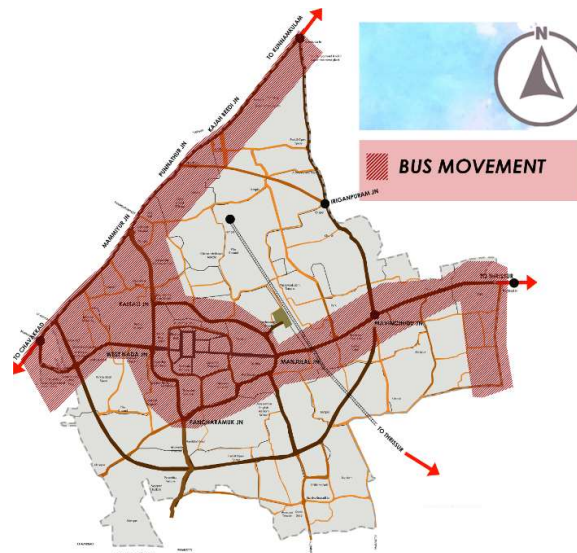


Fig 9. 2Map showing Public Transport Movement of Guruvayur Municipality Area

Source: Development Plan for Guruvayur Town – 2027

Due to the tremendous increase in pilgrim population in Guruvayur Town, a thorough public transportation plan is strongly insisted upon. Currently, buses connect Guruvayur well to other areas of the state. According to statistics gathered, around 456 private buses operate 1200 trips out of Guruvayur, and on average, 41 KSRTC buses do 99 excursions daily.

The public transport accessibility is less for the population in the North Eastern, Southern and South Western areas of the town. This is mainly because of non-plying of buses in the Pancharamukku road and Trenching Ground – Mavinchuvadu road. There are at present 10 passenger trains conducting services to and from Guruvayur Railway station and around 5000 passengers are travelling daily.

#### 9.4 PARKING

Parking studies were conducted at eight locations including separate parking areas and on street parking sites around the temple in Guruvayur Municipality. At present, parking area is available for 650 cars. Out of these eight parking areas available, two parking areas are under Devaswom and the remaining is owned by Municipality.



Fig 9. 3 Map showing Public Parking Locations of Guruvayur Municipality Area

Source: Development Plan for Guruvayur Town – 2027

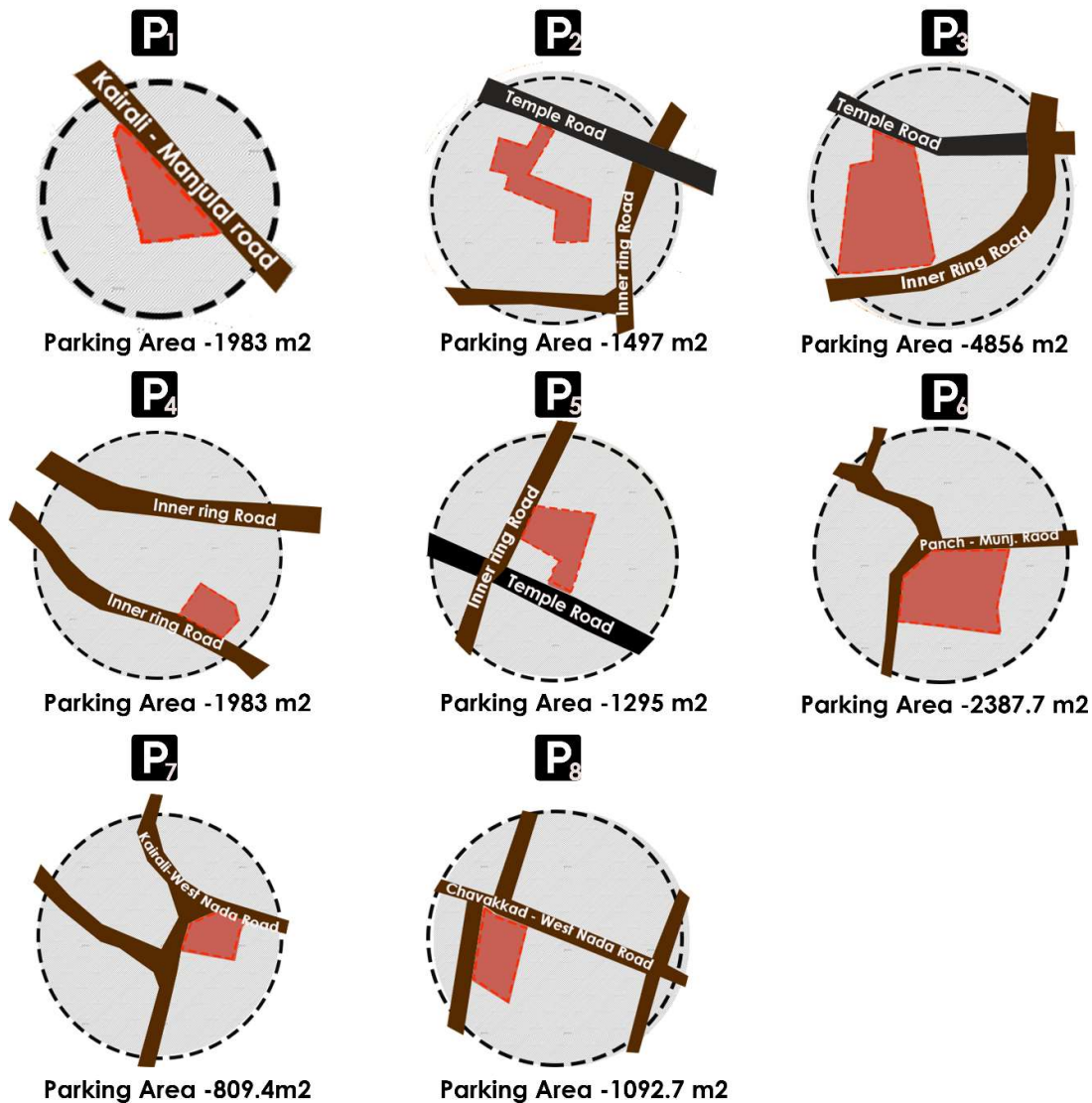


Fig 9. 4 Map showing Public Parking Locations of Guruvayur Municipality Area

Source: Development Plan for Guruvayur Town – 2027

8 major parking location situated near to the temple region. considering to the fact of accessing towards the temple. Total parking area 15903.8 m<sup>2</sup> (0.0159km<sup>2</sup>).

## 9.5 MAJOR STREET PARKING LOCATION NEAR TEMPLE REGION

The vehicle parking in peak season is almost ten times that of lean season in the largest parking area – stadium ground. Parking in Sathram complex in peak season is less than that of lean season due to control on parking and traffic in the inner ring road area. These lead to street parking in the region.

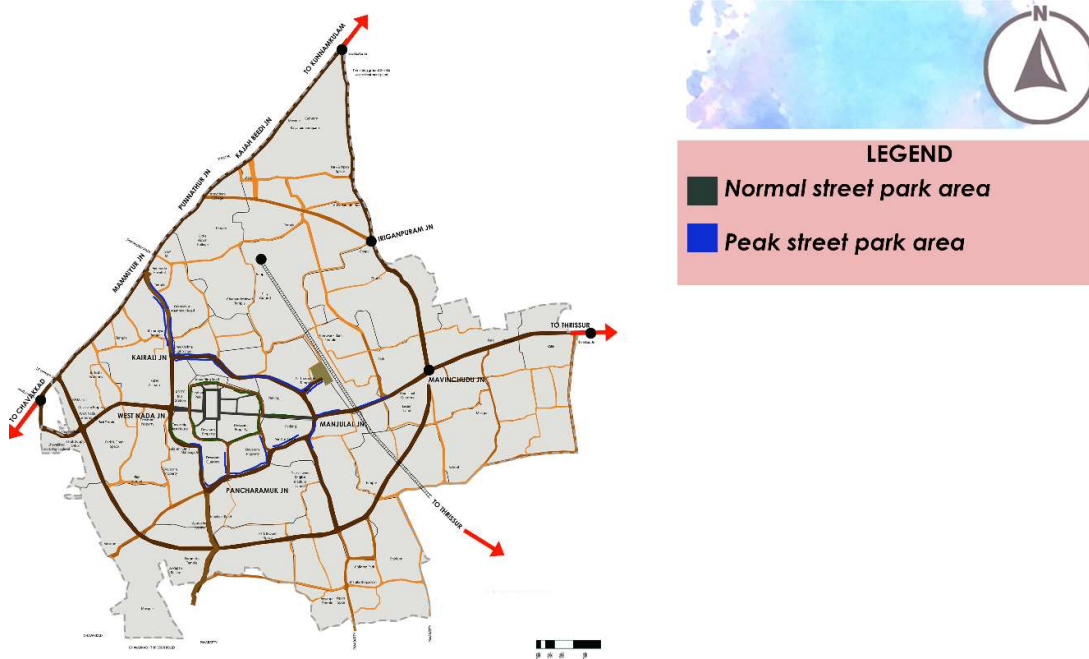


Fig 9. 5Map showing Street Parking Locations of Guruvayur Municipality Area

*Source: Development Plan for Guruvayur Town – 2027*

## 9.6 INFERENCE

The analysis indicates the region lacks in providing public parking area even during the normal time . this also shows the parking during any peak period will trouble the movement of vehichels during any period on time . The floating population of Guruvayur is 35 million people in a year . this leads to heavy traffic movement throughout year. The consider parking region need to be improved by proving addition space for parking spaces



## CHAPTER 10 TOURISM

### 10.1 INTRODUCTION

There are a variety of tourist places to visit in Guruvayur, the quaint town in Thrissur district of Kerala. Home to the fourth largest temple in India, the Guruvayur Shri Krishna temple, the place attracts tourists every year that visit the beautiful town just to witness the 12-day Shivaratri festival held in the temple every year.

Everyday endless waves of men, women and children pour in for darshan (audience) of Lord Guruvayur (Lord Krishna). Besides pilgrims and tourists, brides and grooms with hundreds of guests flock here daily to get their weddings solemnized.

### 10.2 MAJOR TOURIST PLACES

Some of the major tourist places in Guruvayur Municipality Area are as follows :

#### 10.2.1 Guruvayur Sree Krishna Temple

The temple is one of the most ancient ones in India. Guruvayur Temple is dedicated to one of the most revered forms of Lord Vishnu, the temple holds a special place in the heart of people and is, of course, one of the most well-known places to visit in Guruvayur. Besides its cultural significance, people also visit the temple to witness the magnificent architecture of the temple, which till date maintains its classic traditional look.



Fig 10. 1 & Fig 10. 2 Guruvayur Sree Krishna Temple

*Source: Google Image*

### 10.2.2 Sree Chamundeswari Temple

The Chamundeswari temple is one of the most spiritual Guruvayur Tourist place. The temple complex is beautifully designed and the statue of the Devi is made of five metals- gold, lead, copper, iron and silver. Every year, thousand of tourist visit the places to get blessings of the Devi, as well as for meditation and achieving serenity and tranquility. The beautiful exteriors of the place are an added bonus.



Fig 10. 3 Sree Chamundeswari Temple & Fig 10. 4 Mammiyur Mahadeva Temple

Source: Google Image

### 10.2.3 Mammiyur Mahadeva Temple

The locals around Guruvayur believe that the visit to Guruvayur temple is incomplete without also visiting the Mammiyur Mahadeva temple. Besides being a spiritual center, the place is famous for the gorgeous wall paintings and exquisitely crafted sculptures. Shivaratri and Thriuvathira are celebrated with zeal and excitement at the temple and is the ideal time to visit the place.

### 10.2.4 Statue Of Maraprabhu & Guruvayur Kesavan

The magnificent and towering statues of Mahaprabhu and Guruvayur Kesavan. The place is one of the most popular tourist places in Guruvayur because of the presence of these statues. The Mahaprabhu statue is a creative representation of Lord Krishna in the form of a giant banyan tree. The interpretation arises from traditional folk stories and tales. The

statue of Guruvayur Kesavan is dedicated to the deceased Elephant King.



Fig 10. 5 Statue Of Maraprabhu & Guruvayur Kesavan & Fig 10. 6 Thiru Venkatapathy Temple

*Source: Google Image*

### 10.2.5 Thiru Venkatapathy Temple

The Thiru Venkatapathy Temple is one of the most serene places to visit in Guruvayur .The temple is just a kilometer away from the famous Sree Krishna temple will find cal,ness and serenity like never before at the complex- not to mention the breath taking architecture of the place that attracts thousands of tourists every year . The temple bells ringing int the distance paired with the holy atmosphere makes for an ideal place to return to religion and God

### 10.2.6 Sree Parthasarthy Temple

The Sree Parthasarthy Temple is a delight for religious enthusiasts as wall as architecture aficionados. It is dedicated to the charioyeer form of Lord Krishna that is , when he accompanied Arjuna as a companion into the battle of Mahabharata. The entire temple is conctructed in the form of a chariot, with an array of horses pulling the same . The entire structure is awe inspiring and is decorated with intricated and graceful images.



Fig 10. 7 Sree Parthasarthy Temple & Fig 10. 8 Devsaam Museum

*Source: Google Image*

### 10.2.7 Devasam Museum

One of the most interesting places to visit in Guruvayur is the Devaswom Museum, located inside the Shree Guruvayurappan Temple complex toward the east gate. The collection features antiques, musical instruments, mural paintings and other valuable materials. It also includes some unusual items like elephant teeth , rifle and toys.

### 10.2.8 Institute Of Mural Painting

Paintings falls under the jurisdiction of Devaswom Museum and is located with in the Guruvayurappan temple complex. The place is famous for the exquisite art of mural paintings and students travel from all over the world to pursue diploma courses in mural paintings, scultures , aesthetics and art. The institute follows Gurukula systm to ensure an optimum environment for students.

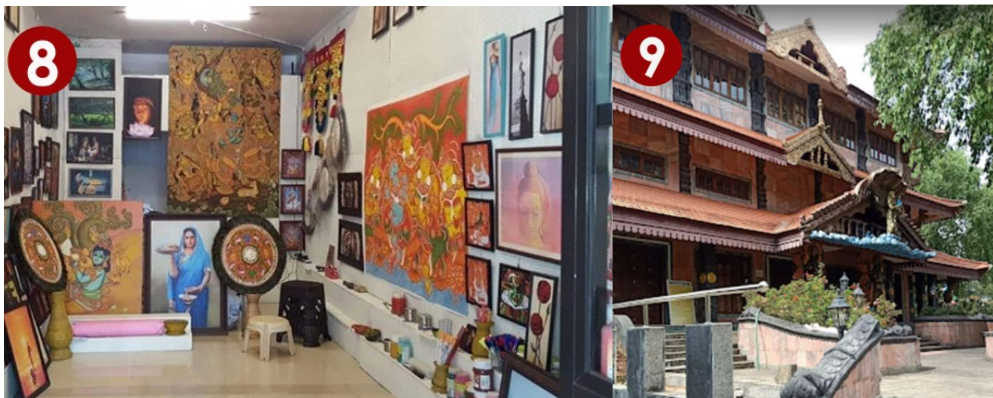


Fig 10. 9 Institue of Mural Painting & Fig 10. 10 Iskon Centre  
*Source: Google Image*

### 10.2.9 Iskon Centre

Iskon Guruvayur is a centre of spiritual education and culture . It offers Goloka Retreats such as The Great Escape on weekends for corporate professionals. Retreats are designed to provide learning , out door activity , good food , spirituality , relaxation and rejuvenation for once body , mind and the very core of once being soul.



Fig 10. 11 Map showing Major tourist spots in Guruvayur Municipality Area

Source: Author generated from Google Map & Guruvayur Master Plan

### 10.3 MAJOR FESTIVALS IN GURUVAYUR TEMPLE TOWN

A Temple is not only a place for worship, but also a center for social gathering and an area for cultural programs. People from far and near, gather here in their fortune best to participate in the merriment. The festivals of special significance in Guruvayur temple includes:

### 10.3.1 Ulsavam

This is conducted in the month of Kumbha (Feb-March) and lasts for 10 days. The hoisting of the temple flag atop the flagstaff (Dwajastambham) about 70 feet high heralds the festival. On the 1st day, an elephant race is held. On the next 6 days, there are elephant processions in the morning, afternoon and night. In the morning, there is the Sribhuta Bali (Offering of oblation at various altar). There are various cultural programs like dance, music, religious discusses are held at Melpathur Auditorium (outside the temple) on all these days. On the 8th day, 'Utsavabali' (from 10 am to 4 pm) or oblations are offered to the Lord's lieutenants. A sumptuous feast then awaits the devotees. Pallivetta or the hunting expedition of the Lord takes place on the 9th day. This hunt is symbolic of the destruction of Kama (desire), Krodha (anger) and other such evils that plague us in our life. After that the Lord's Thidambu is taken to the Rudratheertha (temple pond) for Aarattu, amidst the chanting of mantras. Thousands of devotees also take the dip, chanting the Lord's name to purge them of their sins. Then ucha Pooja (i.e, noon worship –this takes place at night only on this day) is held at the Bhagavati shrine. Finally, the Lord returns to the sanctum sanctorum after 11 circumambulations. The temple flag is then lowered signifying the end of the festival.



Fig 10. 12 Ulsavam & Fig 10. 13 Vishu

*Source: Google Image*

### 10.3.2 Vishu

The first day of Medam (mid April) is the new year day for Malayalees. People believe that the fortunes for the next year depend on the nature of the objects one sees in the morning of Vishu. For this purpose, Kani (an omen) with articles like yellow flowers, rice, betel nuts, golden coins etc. is displayed in front of the deity. Thousands prefer to see Kani at Guruvayur on Vishu morning. Crowds stay overnight inside the courtyard of temple, which

is specially permitted on this day. They close their eyes and set their eyes on the Kani and deity, as the doors are opened at 2.30 am for darshan.

### 10.3.3 Ashtami Rohini

In the month of Chingam (July-Aug), under the Rohini Nakshatra, on the 8th day of the waning moon of Sravana is the day of Lord Krishna's birth i.e. Janmashtami. A very special day in all Sree Krishna temples, Guruvayur Devaswom itself offer a niramala (full of garlands and vilakku), devotees flock in with appam (Cakes of rice paste and jaggery) considered the most favourite food of the Lord on that day.



Fig 10. 14 Ashtami Rohini

*Source: Google Image*

### 10.3.4 Ekadasi

Ekadasi, the eleventh day of every lunar fortnight, is very auspicious to the Hindus. Of the 24 Ekadasis in an year, the Vrishchika Ekadasi (Suklapaksha) has got special significance in Guruvayur. It falls in the Mandala season. The Navami (9th day) and Dasami (10th day) are also very important. Ekadasi Vilakku starts a month before the Ekadasi day as offerings by different persons, families and organisations. On Navami day, the Vilakku is lit with ghee as an offering by Kolady family. The Dasami Vilakku which used to be an offering of Zamorin Raja, is now conducted by Guruvayurappan Sankeerthana Trust. After the temple is open on this day for Nirmalya darshan ( 3.00AM ), it is closed only at 9.00 am on Dwadasi Day (12th day), thus allowing continues darshan for devotees throughout Dasami and Ekadasi Days. On Dwadasi day there is a custom of offering a token amount called Dwadasi Panam in Koothambalam for the welfare of the family.



Fig 10. 15 Ekadasi

*Source: Google Image*

### 10.3.5 Other Major Festival

- Dhaja Prathistra ( January- February)
- Kuchela Day in Dhanu (December – January )

## 10.4 INFERNCE

The analysis indicates the region is packed with temple festival during every section of the year and also the tourism sector is mainly focused with temple tourism as well as pilgrim functions. As per the census 2011 35 million people float to Guruvayur every year.

## CHAPTER 11 PHYSICAL INFRASTRUCTURE

### 11.1 WATER SUPPLY

The major source of water supply in Guruvayur Municipality Area



Fig 11. 1 Major Water Supply of Guruvayur Municipality Area

Source: Author Generated Based on Guruvayur Master plan 2027

- The total requirement of water demand for Guruvayur Municipality Area is estimated to 24 MLD of water
- The water demand of Guruvayur Municipality is covered by KWA , rain water , ground water , packaged water and tanker water .
- In which 5% of the water is supplied by KWA which is estimated to be 1.5 MLD this include 224 working public tapes .
- 89% of the water supply is produced by the availability of ground water . Guruvayur Municipality is having 2780 open wells which includes 48 public well and 2734 private well.

S/N	Type of establishment	Total number ( unit)	Average daily demand	MLD
1	Hotel	200	15000 /unit	3
2	Restaurants	180	6000 /unit	1.1
3	Lodge	150	10000 /unit	1.5
4	Wedding Halls	16	3000 /unit	0.048
5	Schools	27	45 /head	0.21
6	Railway Station	1		1

Table 11. 1 Major Water Demand of Guruvayur Municipality Area

Source: Author Generated Based on Guruvayur Master plan 2027

- Rain water analysis shows an average of 30 million liter water is potentially available to be recharged where it is not effectively implemented in the region (average 122 rainy days are available with an average of 255mm rain fall received yearly )
- An average of 12.5 MLD water is needed to be used by Guruvayur Municipality for the domestic purpose , packaged water 2.85 MLD ( required 4.5) for agricultural use 1.3 MLD , temple rituals 1.5 MLD .
- Sources of water supply with their quantity and water demand for various activities were estimated The collected and analyzed data demonstrated that the city is under a severe water stress condition, with a deficit of almost 6 MLD of water in order to meet its total water demand. Most of this deficit was for meeting commercial demand spread across the wards and for temple purpose.

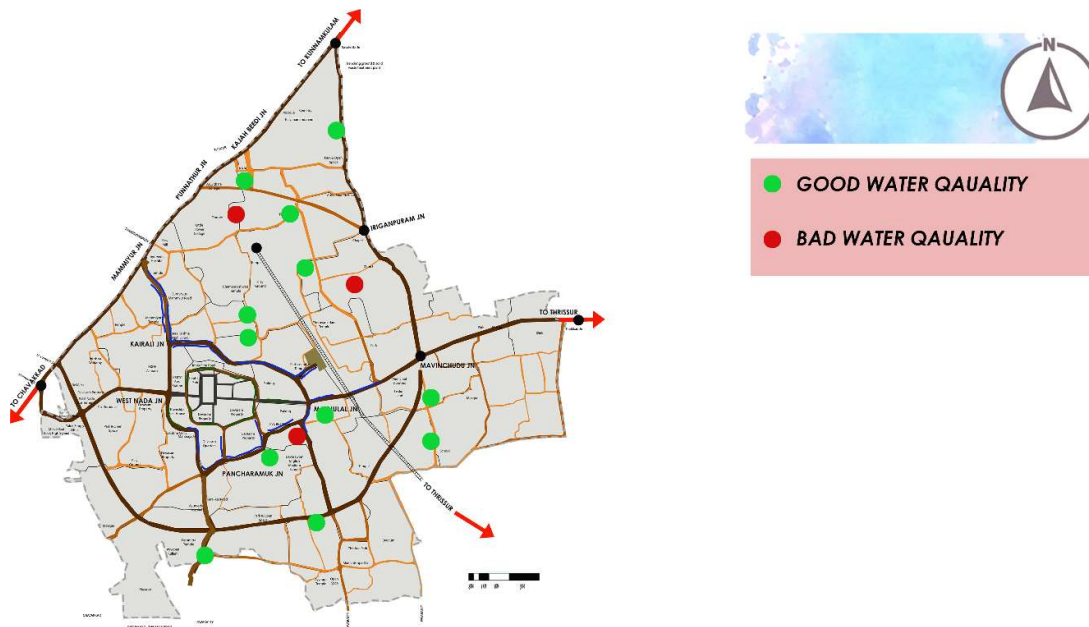


Fig 11. 2 Map showing variation of water quality in Guruvayur Municipality Area

Source: Author generated from city scale water audit of a pilgrimage town in south india

From the map analysis it indicated that 75% of the water quality is good and 25% of the water quality in bad. The domestic water demand of Guruvayur Municipality Area show 7% salinity in ground water.

## 11.2 WATER BODIES

Guruvayur was once the land of many water bodies such as streams and ponds. “VALIYATHODU” of Guruvayur was once the major water channels of Guruvayur area which helps in avoiding seasonal floods, which became a regular feature at present in Guruvayur. The width of ‘Valiyathodu’ which was about 15 - 25 m, some period ago is now reduced to 2.5 m in some places due to encroachment. The natural formation of several streams joining the “VALIYATHODU” which made an effective surface drainage system earlier is almost ceased to exist now. This also eventually led to environmental degradation.



Fig 11. 3 Current drainage situation Guruvayur municipality  
Area which is badly effected

*Source: Google Image*

nearly 40 million people visiting the temple every year, the Sreekrishna Temple in Guruvayur is the fourth largest temple in terms of number of visitors. Hundreds of hotels, restaurants, service apartments and resorts cater to the needs of the visitors. Chakkamkandam is at the receiving end of the influx, with the villagers being affected by the sewage from the commercial establishments, and with no reprieve in sight.

Aliyathodu and Cheriyaathodu are two natural freshwater channels in Guruvayur that run for 3km through the town before joining Chakkamkandam backwaters. Though the Municipality Act insists on complete waste management at source, the commercial establishments let the raw sewage into the two channels and dump waste.

### 11.3 MAJOR THREATS & ENVIRONMENTAL SENSITIVITY OF GURUVAYUR MUNICIPALITY AREA

- The only major water body of Municipality, the “VALIYATHODU” is ruthlessly encroached and totally polluted. The liquid waste from large number of ‘Kalyanamandapam’ (wedding halls), lodges, hotels etc. are functioning as pollutants.
- Most of the small drainage channels leading to “VALIYATHODU” were either ceased to exist or converted into roads without providing alternate and sufficient arrangements for surface water drainage.
- Most of the big ponds which were once the main water source of Guruvayur was filled up for construction activities and the remaining are facing the threat of extinction.
- The large quantity of liquid and solid waste from large number of hotels, lodges, tourist centers, marriage and community halls functioning in Guruvayur especially within 500 m around the temple is the main source of air, water, land and environmental pollution of Guruvayur town. Improper and insufficient arrangement for collection and disposal of sewage waste is one of the major causes of environmental degradation. Direct disposal of human excreta from large number of old lodges to the drains along roads also causes major
- problems. As per the DPR on Solid Waste Management of Guruvayur Municipality the consolidated quantity of waste generation (kg/day) of Guruvayur Municipality at peak seasons was estimated at 13586 kg/day, out of which 2750 kg was generated from Guruvayur Sree Krishna Temple.
- Open air disposal of large quantity of solid wastes in trenching ground poses a big threat to the healthy living condition of people in that area. Solid waste dumped in large quantity and regular open air burning; mainly act as a regular source of pollution in the northern area of the town.
- Filling up of huge areas of agricultural lands may cause total environmental imbalance in the near future.
- Haphazard and unplanned development of large number of flats near the CBD may also cause environmental degradation of town.

## 11.4 INFERENCE

The analysis indicates the region lacks in providing required of water for the daily needs which is differentiated by 6 Mld of water supply

The water canal is very much exploited by the differnt sectors of thr municipality area . water drainage facilty is very much lack in the current condition.



## CHAPTER 12 SOCIAL INFRASTRUCTURE

### 12.1 MAJOR EDUCATIONAL INSTITUTIONS

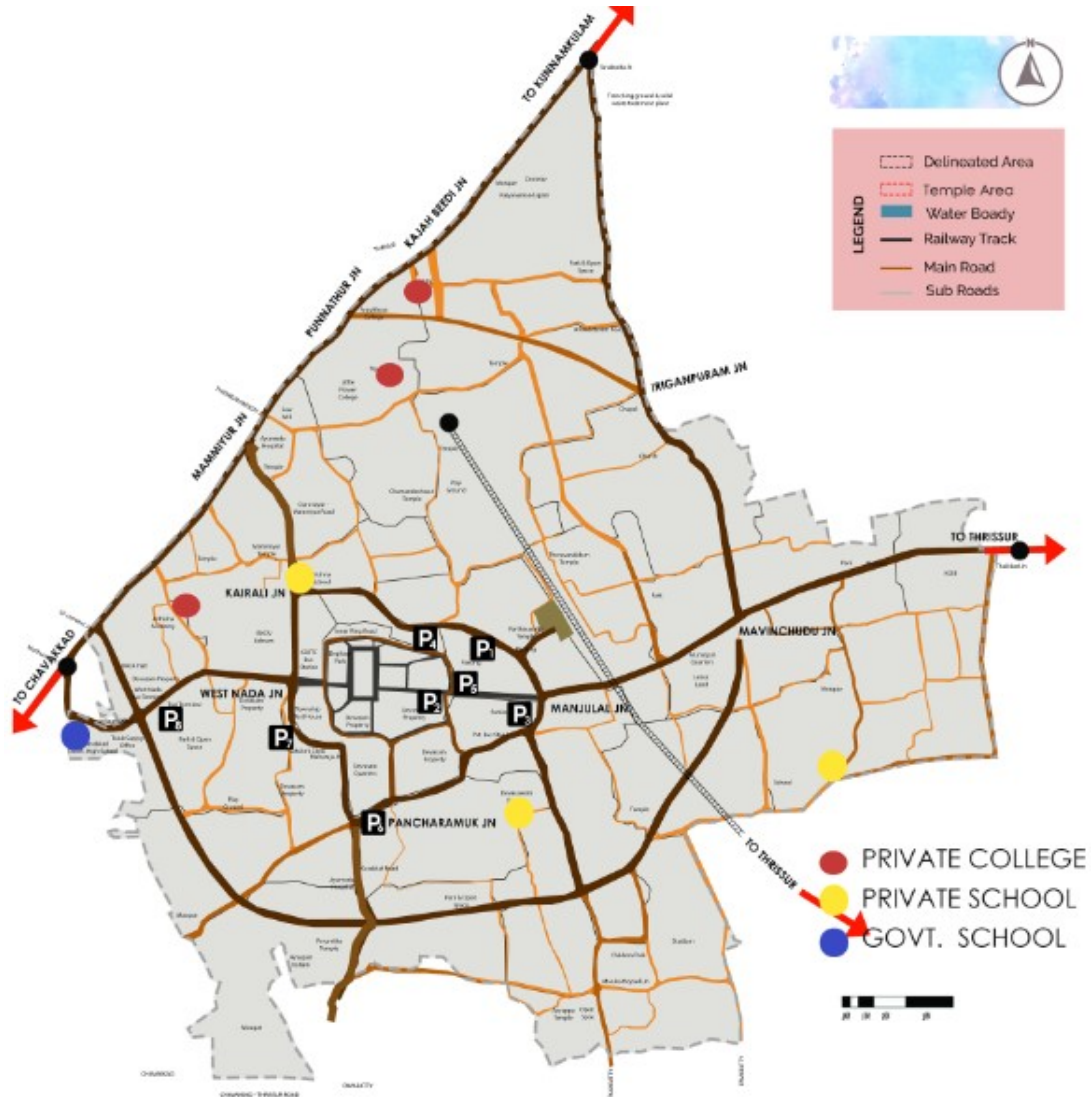


Fig 12. 1Map showing major educational institutions in Guruvayur Municipality Area

Source: Author generated based on primary survey

The study indicates the area is having three private colleges, three private schools and one government school in the region. According to analysis the region is very much satisfied with required educational institutions such as of schools and colleges.

## 12.2 MAJOR HEALTH INSTITUTIONS

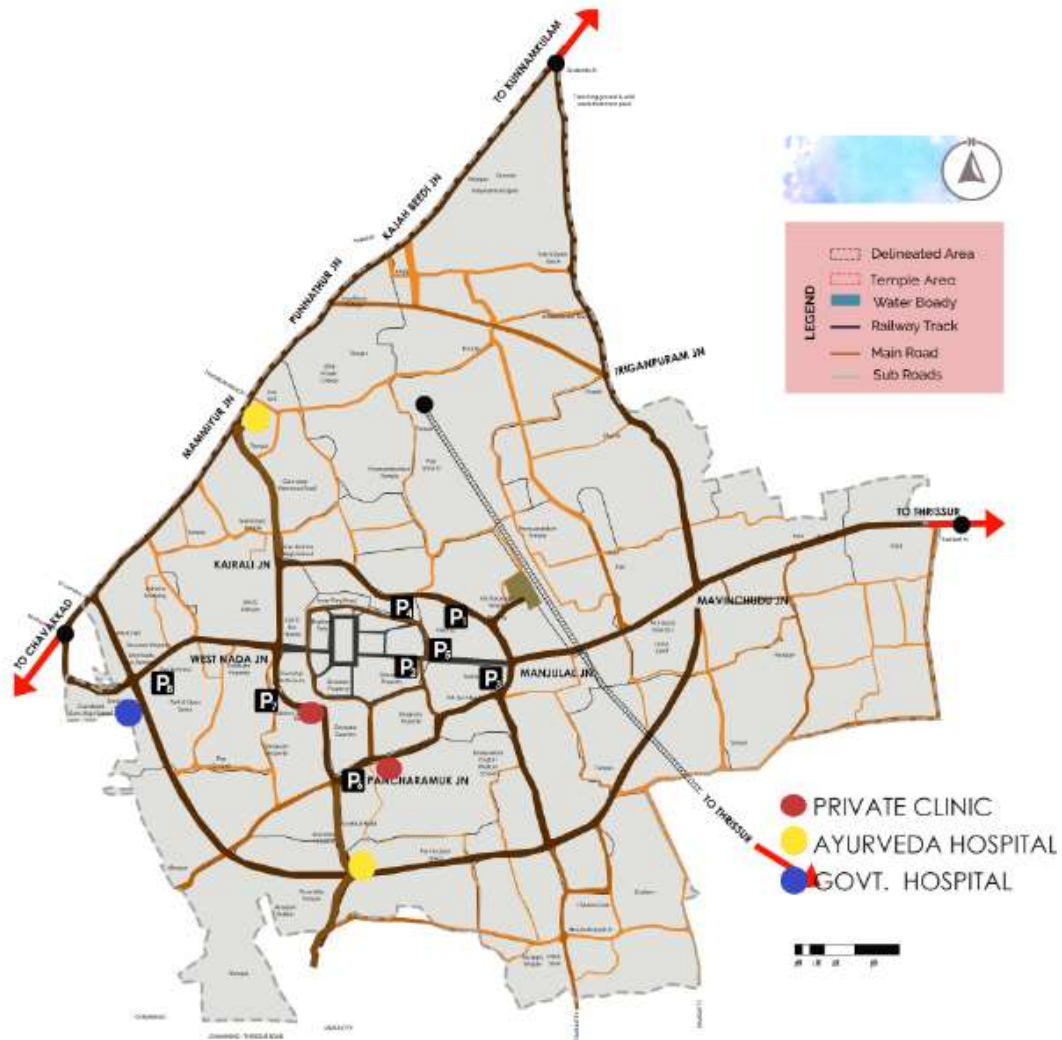


Fig 12. 2 Map showing major health institutions in Guruvayur Municipality Area

*Source: Author generated based on primary survey*

The study indicates the area is having two private clinics, two Ayurvedic hospitals and one government hospital in the region. According to the analysis the region is very much satisfied with private clinics and ayurvedic hospitals. The region lacks in providing hospital services which includes with the amount of bed spaces.

### 12.3 MAJOR RELIGIOUS INSTITUTIONS

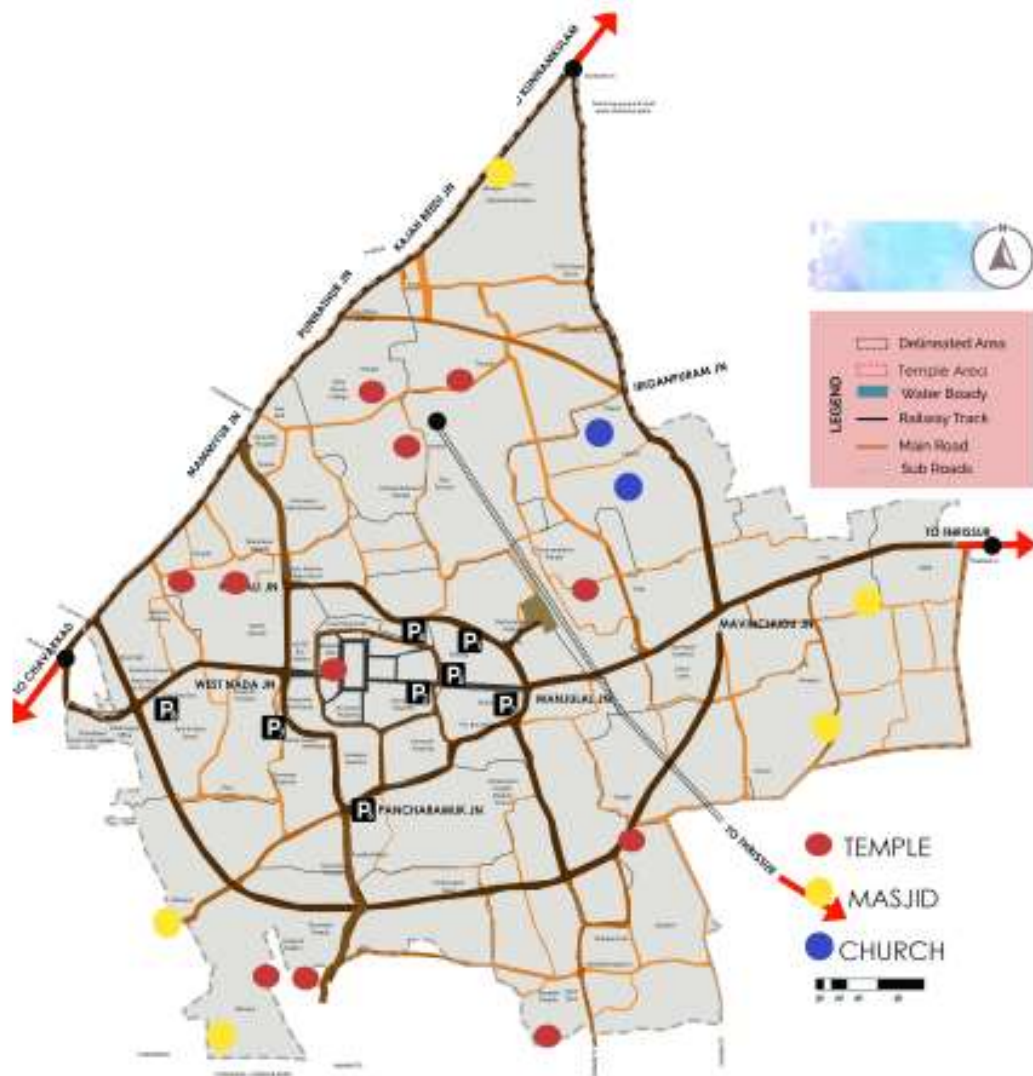


Fig 12. 3 Map showing major religious institutions in Guruvayur Municipality Area

Source: Author generated based on primary survey

The region is very much good with religious institutions. The region is having eleven temples, five mosque and two church respectively.

### 12.4 MAJOR CIVIC INSTITUTIONS

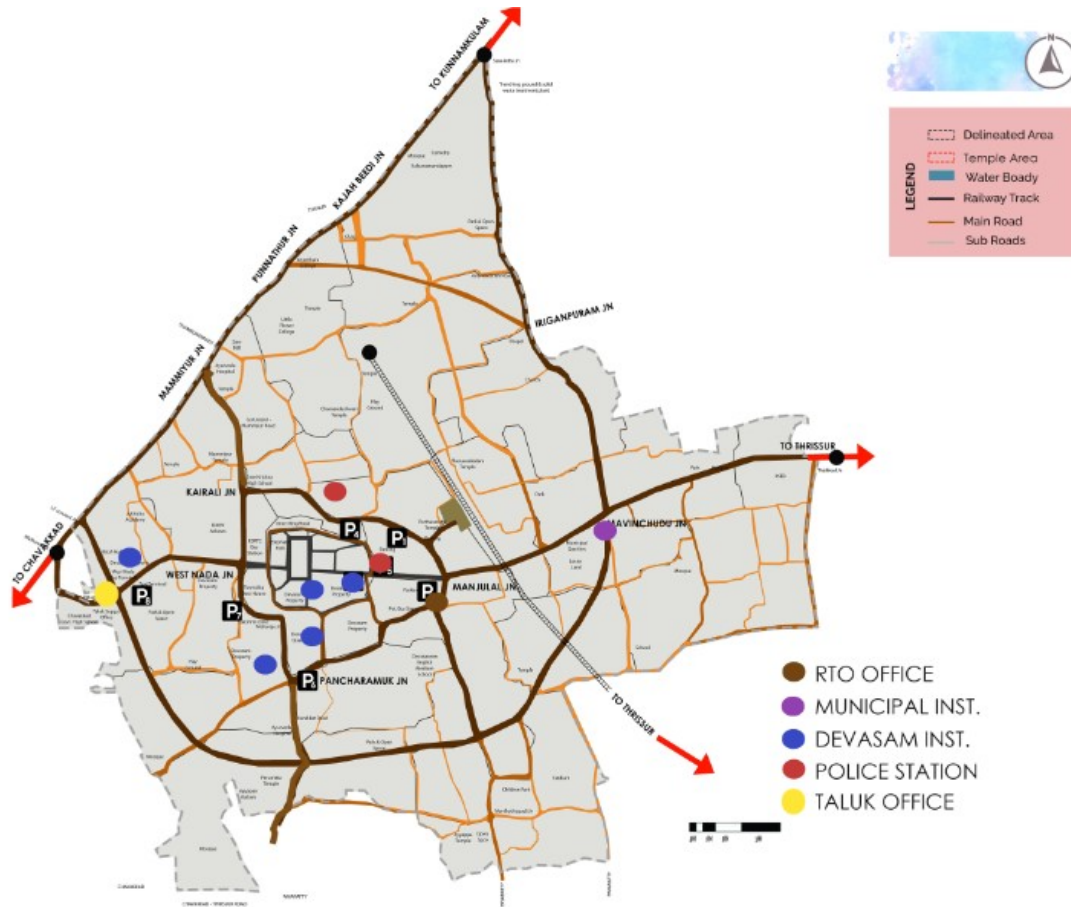


Fig 12. 4 Map showing major civic institutions in Guruvayur Municipality Area

Source: Author generated based on primary survey

The region is having five devesam institutions , one municipality , one RTO office , one Police station and one Taluk office repectively. According to the analysis the region is very much satisfied with required civic bodies .

### 12.5 MAJOR RECREATION INSTITUTIONS

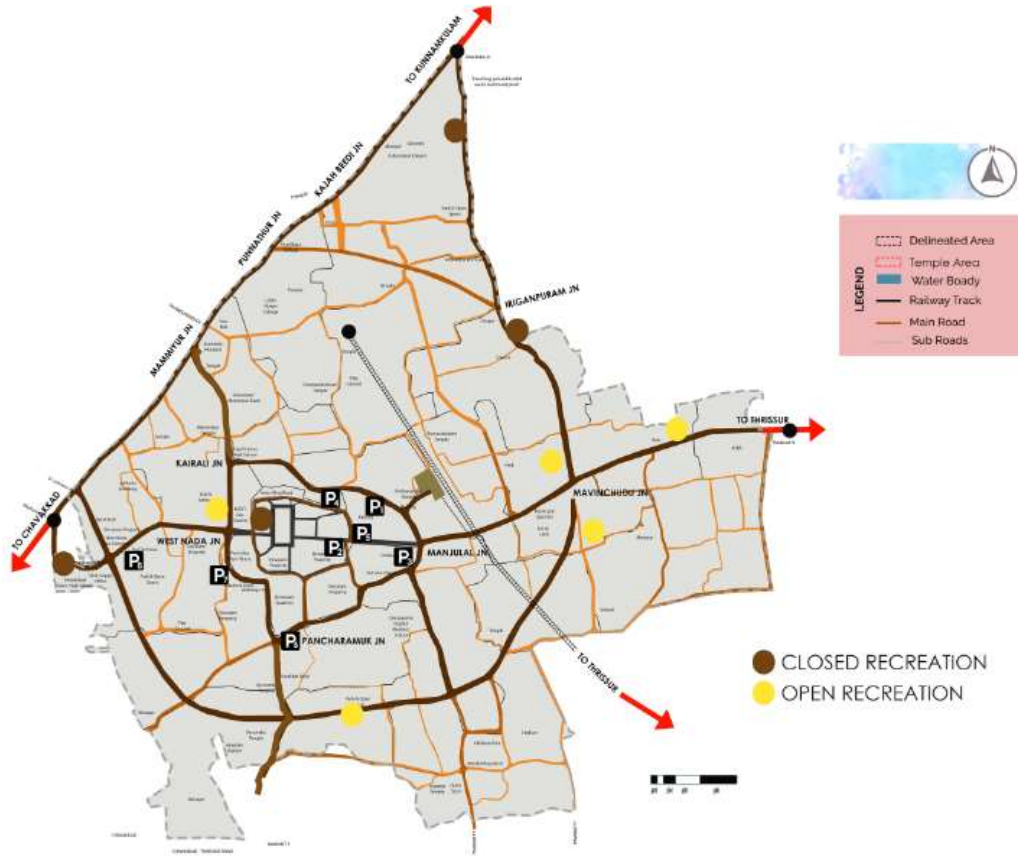


Fig 12. 5 Map showing major recreation institutions in Guruvayur Municipality Area

Source: Author generated based on primary survey

The region is having four closed recreations and 5 open recreation institutions respectively. Required recreation facility area provided in the delineated area and it is very much satisfied.

### 12.6 INFERENCE

According to URDPFI guideline the required social infrastructure is not provided, this includes major missing in educational and health institutions



## CHAPTER 13 CASE STUDY

### 13.1 INTRODUCTION

Odisha is an attractive treasure house of cultures and customs , religion and traditions, languages and literature, art and architecture, and so on . Endowed with rich cultural , heritage and bestowed with bounties of nature , Odisha is a fascinating state with majestic monuments , beautiful beaches , luxuriant forests, enchanting wildlife etc... Wedged between West Bengal and Andhra Pradesh , Odisha lies on the eastern coast of India with the water of the Bay of Bengal swirling along its eastern and south-eastern boundaries with an area of about 1,55,707 square kilometres.

### 13.2 PURI KONARK DEVELOPMENT AUTHORITY

The Puri Konark Development Authority (PKDA) area is a peninsula of natural scenic beauty jutting into the Bay of Bengal, located south of Bhubaneswar and Cutak. The area includes the municipal boundaries of Puri, his NAC area of Konark, and adjacent rural areas contained in 131 tax villages with a population of about Rs 4.96 lakh (according to the 2001 census), covering 296.33 sq km. covers an area of The proximity of the PKDA area to his two major cities - Bhubaneswar and Cutak - makes it an ideal destination for pilgrims and tourists.



Fig 13. 1 Puri

The Municipality of Puri was founded in 1881. After independence, the Municipality of Orissa Act (1950) was enacted and municipal administration was transferred to Puri Municipality, represented by a popularly elected chairman and councilors.

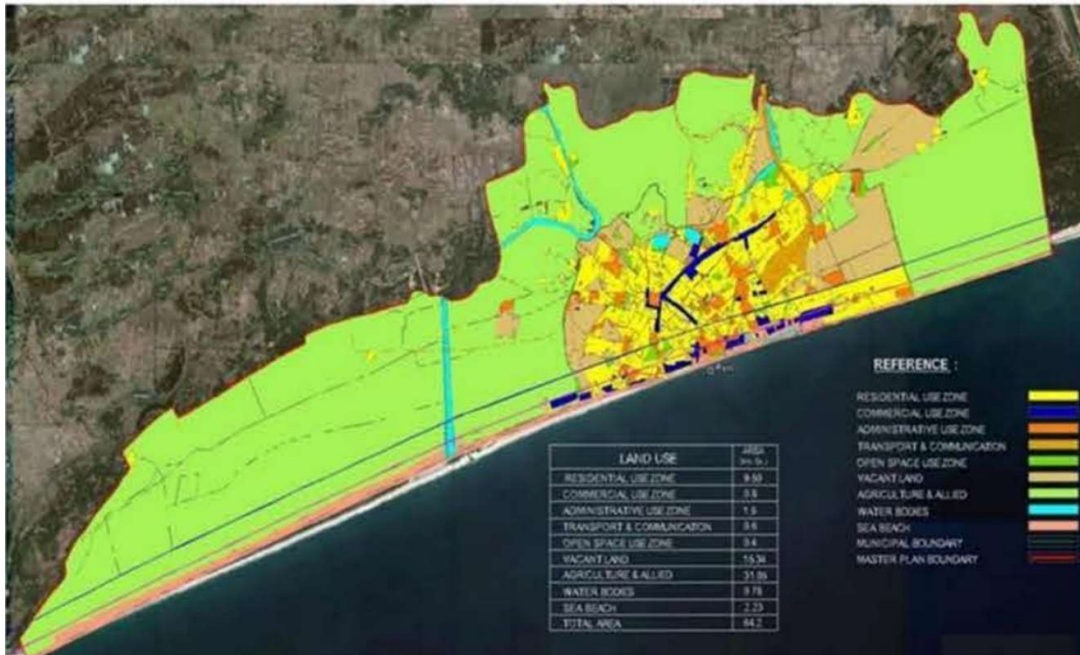


Fig 13. 2 MASTER PLAN

### 13.3 PURI KONARK DEVELOPMENT AUTHORITY

According to legend, Puri observed thirteen significant festivals in a calendar year. However, Puri actually celebrates a number of festivals throughout the year. Importantly, all of these events have more than just cultural and historical roots. These activities have a potential impact on employment and economic development both directly and indirectly. Around 80% of the income is thought to be associated with heritage-related activities.

The area, which is located in the Golden Triangle of the tourist route, draws a lot of visitors all year round. The main tourist destinations include Puri's Jagannath Temple, Konark's Sun Temple, Chilika Lake, and the area's unspoiled beaches.

### 13.4 HERITAGE & CONSERVATION

The heritage town of Puri can be divided into six major precincts on the basis of types of structures and activities that take place

TEMPLE \* MATHAS \* AKHADAS \* JAGAGHARS \* VERNACULAR & TRADITIONAL BUILDINGS \* HOLY TANKS

### 13.4.1 Tangible heritage

Puri city is divided to 7 zones according to the heritage conservation

- **Zone I**  
This is the first zone which forms the epicenter of the kshetra. it houses the idol of the lord Jagannatha, Subadhara and Balabhadra. It lies on the divine platform.
- **Zone II**  
The second fold is hexagonal in shape and located in this are four goddesses of power, two tirthas and two sacred trees, Garuda and the top of the hill which is in form of a tortoise shell.
- **Zone III**  
The third part is the outer layer of the second fold, it is the central part of the lotuslike structure having 8 petals. Each petal has an idol of Shiva and a goddess.
- **Zone IV**  
This area comprises of the area between the inner compound wall and the outer compound wall
- **Zone V**  
The eight incarnation of Siva known as Asta Sambhu, believed to have been guarding the sacred land and Goddess Chandi or Kali is protecting the holy kshetra in 8 different names. These are very old shrines and have some ritualistic relationship with the Jagannath Temple, place for temples of God and Goddess who are considered to have been the guarding icons of the presiding deity are also placed carefully with link roads to approach them.
- **Zone VI**  
This zone has the sacred tirthas the tanks and fourth is the ocean or the Mohodadhi. It is said that visiting these holy/sacred places in Puri is equivalent to visiting the three holy/sacred places in India Gaya, Kashi and Haridwar
- **Zone VII**  
The goddess Chandi or Kali, who has eight various names, is believed to be guarding the holy kshetra. She is also recognised as one of Siva's eight incarnations and is known as Asta Sambhu. The Jagannath Temple, where temples of God and Goddess who are thought to have served as the guardians of the main deity are located, has some ritualistic ties to these extremely old shrines. To reach them, connect the roads.

- Zone VI

It is stated that visiting these holy/sacred places in Puri is equal to visiting the three holy/sacred places in India, Gaya, Kashi, and Haridwar. This zone has the sacred tirthas, the tanks, and fourth is the ocean or the mohodadhi.

### 13.5 ZONING AND ASSESSMENT OF HERITAGE STRUCTURE

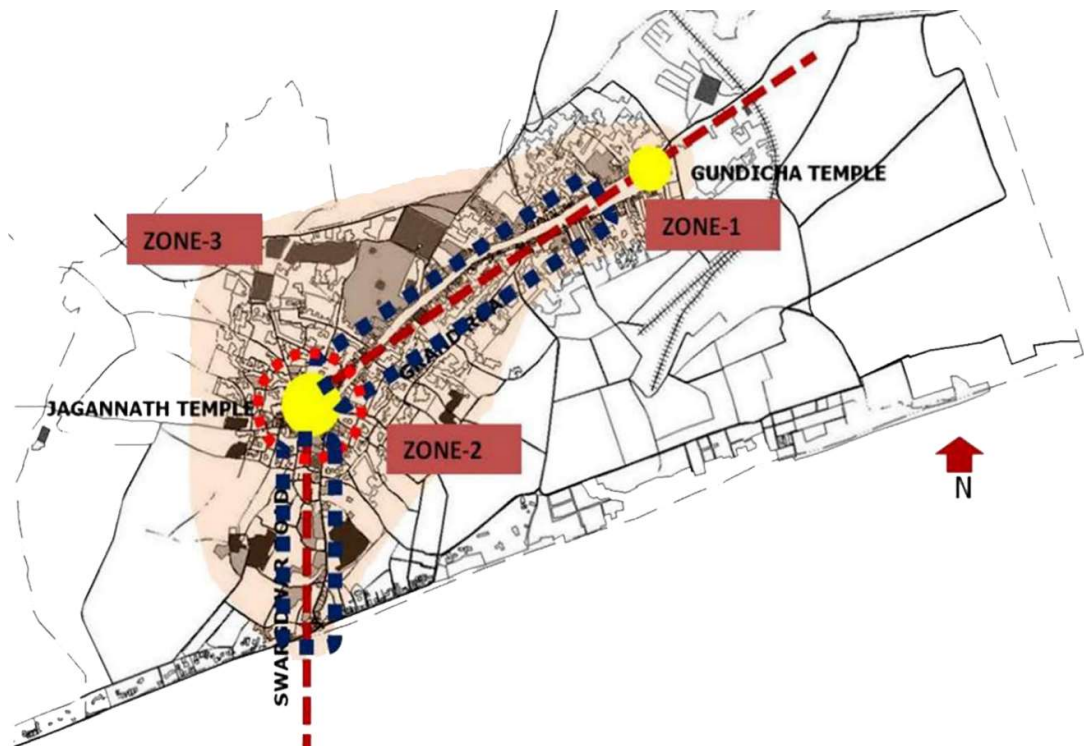


Fig 13. 3 Zone I,II,III

#### 13.5.1 Zone-II : Zone-I : The Grand Road

This area mostly consists of the Grand Road Stretch (Bada Danda), which, other from in the direction of the Gundicha Temple, is primarily made up of commercial establishments.



Fig 13. 4 Zone 1 & 2

### 13.5.2 Zone-II : The Grand Road

Zone II primarily consists of the Swargadwar road stretch, which extends from the temple's Eastern Gates or Lions Gate all the way to the Swagadwar Square next to the Puri Beach.

The largest number of Mathas were included in this stretch, and 25 of them were subjected to surveys and studies. The land use along this entire stretch is diverse. Most businesses are found selling sweets and other products that are presented to the temple at the end closest to the temple. As one moves farther into the area, the land use abruptly transforms into low-density, low-rise residential buildings, which also include many Mathas in this particular corridor that are well conserved in comparison to the other zones.

### 13.5.3 Zone-III : Temple Precinct

The Swargadwar road stretch, which runs from the temple's Eastern Gates or Lions Gate all the way to the Swagadwar Square near to the Puri Beach, makes up the majority of Zone II. This stretch contained the greatest number of Mathas, and 25 of them were the focus of surveys and research. This entire expanse of property is used in a variety of ways. At the end closest to the temple, the majority of businesses are found selling candy and other items that are offered to the temple. The land use rapidly changes as one proceeds further into the area to low-density, low-rise residential structures, which also include several Mathas in this particular corridor that are highly conserved in compared to the other zones.



### 13.7 INFERENCE

To restore heritage value, the majority of Mathas need to be restored and redeveloped due to poor maintenance and inadequate infrastructure. The fact that the many historical buildings are not connected to one another prevents tourists from receiving an integrated heritage experience. Mathas are poorly maintained and not having adequate infrastructure which needs to be upgraded and redeveloped to revive heritage value

The various heritage structures are not linked with each other does not leading to integrated heritage package for tourist.



## CHAPTER 14 ANALYSIS

### 14.1 DEMOGRAPHY ANALYSIS

Demographical analysis of Guruvayur Municipality Area shows a negative population growth from 1981 - 2011 ( this indicates that the population of the region is moving towards the peripheral or migrating away from the region due to higher floating of tourists towards the temple town )

### 14.2 HOUSE HOLD

- The average house hold size of Guruvayur Municipality area is 4.72. This also indicates a slow decline in house holds in the region
- Wards 'Convent' & 'College' house hold size is 5.60 and 5.06 respectively which are higher in point as compared to others and Ward 'Satram' having the least house hold size which is 3.65 (temple core).

### 14.3 LANDUSE ANALYSIS

- All land use except residential land use is considered to be below the standards recommended by URDPFI guidelines

S/N	LANDUSE CATEGORY	ON SITE	REQUIRED
1	Residential	56.27 %	35-40 %
2	Commercial	2.7 %	5-7 %
3	Industrial	0.108 %	4-5 %
4	Public & Semi Public	4.75 %	10-12 %
5	Transportation	5.14 %	12-14 %
6	Recreation & water body	1.87 %	10-12 %

Table 14.1 Table showing comparison on Guruvayur municipality Area with URDPFI standards  
Source : Author Generated based on URDPFI GUIDELINE

- Residential land use is 16.27 % and industrial land use is considered to be least. 75% of the commercial land use settlement falls in the centre of the region. New commercial development can be developed near the peripheral of the region.

#### 14.4 TORISM ANALYSIS

- Major tourism spot of the region mainly falls with pilgrim tourism and specific architectural tourism is also been adopted.
- Recreation tourism sectors such as museum , folk institutes and so on are present in the region .
- Major festivals in the region happen half a year time period during during regural times . Floating population of the region carries from 60000 t0 80000 people per day this considered to be the peak months of the year .

#### 14.5 INFRASTRUCTURE ANALYSIS

- The region lacks with health care institution like primary health centres
- Religious institution are very much comprimising in th e region
- Water scarcity is a an issue in the region considering the fact of 6 MLD water shortage
- According to DPR of soild waste managment Guruvayur Municipality generates 13,586 kg waste per day in which 2750kg waste is generated from sree krishna temple.

#### 14.6 TRAFFIC AND TRANSPORTATION ANALYSIS

- The region have very much better connectivity but considering the fact of road width , road width in the core area in quite narrow
- 75% of the region is having public transportation facility , the area includes the core region.
- The region lacks in providing parking facilty only 51.4% of the parking is provided additiional facilities needed to be indentified.

## CHAPTER 15 SWOT ANALYSIS

### 15.1 STRENGTH

- The study area has a good connectivity in terms of roadway and railway.
- The educational and health facility in the study area are well established
- There are on going projects under PRASAD and AMRITH SCHEME which enhance the pilgrim region development and water sanitation development.
- The study area characteristics of temple town with reference of the temple
- The region has strong pilgrim movement it shows active pilgrim tourism in the region
- The major tourism regions are in the core area at a radius of 1 km.

### 15.2 WEAKNESSES

- The parking facilities are very much low as compared to the floating population of the region.
- Commercial, public & semi public spaces, recreation center, lodges and walkable areas are more concentrated towards the core area and less towards the periphery. This will negatively affect the movement in the core region.
- The existing water supply in the region is not very much satisfying, where it lacks with 6MLD of water supply every day
- No proper mechanism for the disposal of waste, as the amount of waste generated from each sector including restaurants, hotels, commercial area and so on area not properly disposed, this affects the water canal system and other water bodies very badly.

### 15.3 OPPORTUNITIES

- Guruvayur is a spiritual destination which can attract the pilgrim population very much this will benefit the economic development of the region.
- More than a spiritual destination tourism, Package tourism can be developed by adding neighboring tourism sector from north Guruvayur and some parts of Chavakkad Region. (In way package tourism can be promoted. This will benefit equally.
- Cultural institutional development can be developed as the region is very much good with its mural art and other folk cultures.

## 15.4 THREATS

- The floating population of the region is more than 30 million people per year ,which causes vulnerable to the enviromental & ecological system of the area .
- Due to the high floating populating in the region which cause high problems in waste managment system of the region

## CHAPTER 16 VISION MISSION & GOALS

### 16.1 VISION

Promotion and Development of Guruvayur municipality with special focus on ‘enhancing distinctive character’, that includes its heritage, culture, and connectivity for accommodating the needs of the tourists and well-being of its residents.

### 16.2 MISSION

- **TRANSPORTATION AND URBAN MOBILITY DESIGN**

Urban transportation system to support the creation of integrated road network which promote high level of permeability and legibility for all users, and in particular more viable form of transportation.

- **TOURISM DEVELOPMENT**

Delivering quality cultural heritage experiences to tourists by promoting the tourism potential to enhance the economic and social prosperity of city.

### 16.3 GOALS

- Conservation of temple and cultural heritage of Guruvayur municipality Area
- Effective ,safer transit mobility center
- Effective sanitation improvement in the region.



## CHAPTER 17 STRATEGIES & PROPOSALS

### 17.1 STRATEGIES

- To provide adequate infrastructure facilities and services in pilgrim area which includes in zone 1 and 11 regions
- Public infrastructure should be provided in required area such as in the core area region of the municipality.
- To provide pilgrim tourism itinerary to the pilgrim tourist on different phases.
- To provide tourism policies in order to generate income to the local people of the region by providing self employment.

### 17.2 PROPOSALS

#### 17.2.1 PROPOSAL FOR WASTE BIN CHECK POINTS IN ZONE 1

- Proposal deals with providing waste collection points before accessing the temple region. The procedure deals not only for the tourist and also for the locals. This improves the environmental conditions and also Eco-development of the region.
- The general procedure points from the entrance to the exit point of zone 1.



Fig 17. 1 Proposal for waste bin check point

Source : Author generated

#### 17.2.2 PROPOSAL FOR RE - CYCLED UNITS & SALE

- The collected waste from the check points are sent to shredding unit for recycling and made it possible to produce quality products.
- These eco- friendly products are made by involving people in the community

- These working classes consist of unskilled workers and giving them proper training developinn a local industry that can upgrade their livelihood

### 17.2.3 PROPOSAL FOR MULTI LEVEL CAR PARKING IN ZONE 11



Fig 17. 2Multi –Level Car parking

- Proposal deals with proving multi level car parking in the existing parking area in which parking areas can be increased
- Multi level car parking includes 2 wheeler , 4 wheelr and for heavy vehicle ( busess/ mini buses)
- This proposal deals with help in reducing parking of vehicles in th street.

## 17.2.4 PROPOSAL FOR PROVIDING E- TOILETS IN ZONE 1 AND ZONE 11

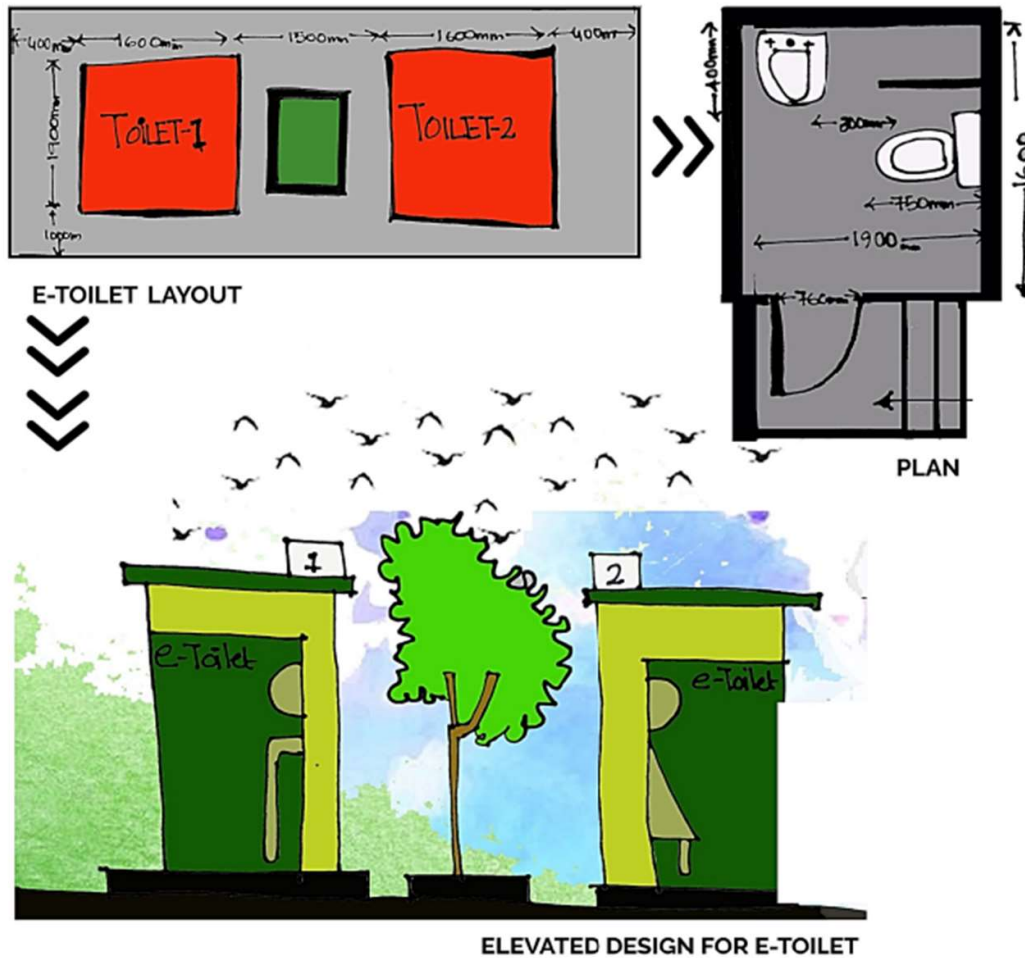


Fig 17. 3 E- toilet

- An electronic toilet or e toilet is a type of public toilet that is used in India . The increase in use of e toilet is in support of Swachh Bharat Abhiyan, which intended to reduce the practice of open defecation toilets area self - contained , self cleaning , unisex , user friendly , automated and remotely monitored toilet pods installed in public places.
- e toilet can be coin operated pay toilet or freely accessed with manual entry and exit. A safe guard corridor panel services as a screen to avoid disturbing the public or the users of the toilet . The entire unit is made of stainless steel. like other self sustaining electronic public toilet e toilet have sensors to initiate automatic functions includes pre flushing and post flushing platform cleaning .
- e toilets are proposed after an equal distribution of stretch on the proposed road network this proposal properly help the pedestrian as well as vehicular travelers etc..

### 17.2.5 PROPOSAL FOR PROVIDING WALKABILITY IN ZONE 1 AND ZONE 11

- The walkability of zone 1 & 11 need to be improved . it will help to reduce the use of vehicles in the major roads of zone 1.
- Most of the roads coming with in the zone 1 & 11 have not pedestrians walk way , except in the core of zone 1
- By providing walk way in zone 1 and 11 , that can reduce the use of vehicular movement , this will also helps in reducing the traffic in inner roads of zone 1 & 11

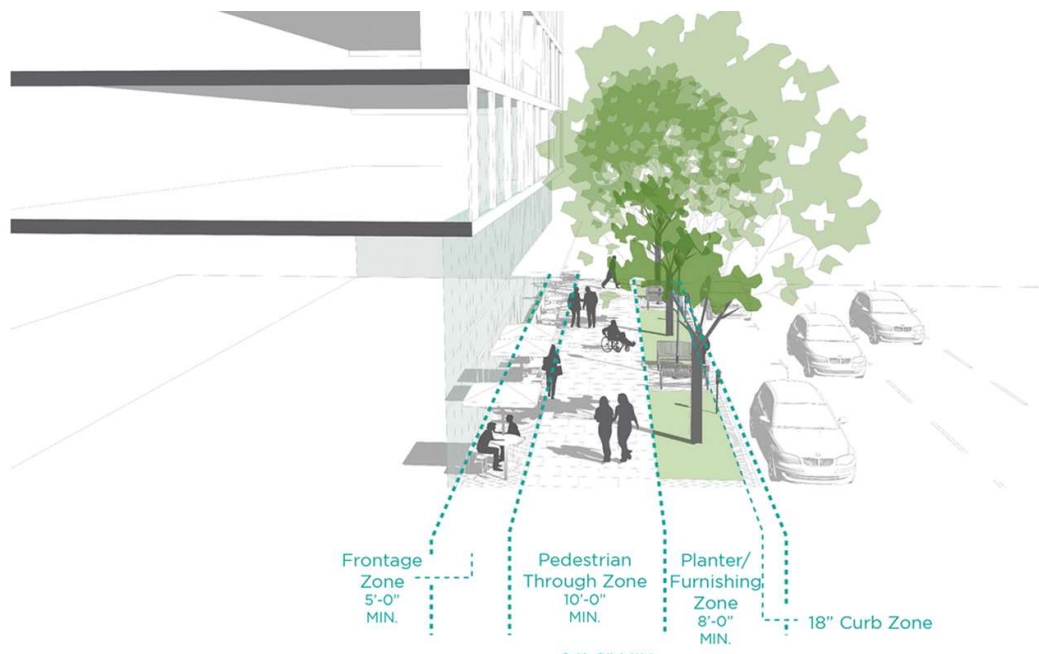


Fig 17. 4 Walkability

## CHAPTER 18 CONCLUSION

In this project report we have presented a process that we adopted to develop and prepare a development plan for the Guruvayur Municipality as the thesis Project of the Planning Studio IV. It also discusses about how the potentials provided by the area has been tapped efficiently and effectively and how the challenges created to its environment and its own sustenance has to be negated by prior planning, management and governance measures.

This study includes existing scenario, analysis, recommendations and proposals for an area's population, transportation, land use, housing and community facilities.. It considers all sections of people in the society in development proposals and focuses on affordability. It translates the community values, desires and visions in to land use and development principles that can guide the future growth of a community.

The proposal focuses on majorly three missions 'viable transportation and urban mobility design, tourism development and re-establishing urban environment. These mission aims at better urban transportation system, delivering quality cultural heritage experiences to tourists and restoring conditions of the urban environment through infrastructural and transit supported solutions.



## CHAPTER 19 REFERENCES

Govind M.P.1, Yogesh Keskar2 (2015) Environmental Status Assessment of Guruvayur Temple Precincts in Kerala, India

International Journal of Innovative Research in Science, Engineering and Technology

Margret C. Kirnbauer& Brian W. Baetz. A prototype community-based planning tool for evaluating site suitability for the temporary reuse of

vacant lands, International Journal of Urban Sustainable Development, 6:2, 221-240,

DOI: 10.1080/19463138.2014.899230, 2014

Development Plan for Guruvayur Town Ship – 1967

P. S. Harikumar, Anisha Aravind, Sandra Vasudevan (2017) *Assessment of Water Quality Status of Guruvayur Municipality*

Water Quality Division, Centre for Water Resources Development and Management, Kozhikode, India

Environmental Issues of Kerala in General and Kochi/Ernakulam in Particular (2016).

<http://www.indiaenvironmentportal.org.in/files/file/environmental%20issues%20of%20kerala.pdf>

Shradha Chandan, Ashwani Kumar (2019) Challenges for urban conservation of core area in pilgrim cities of India

Journal of Urban Management

M.Rajakumari, R.Kalaiselvi, K.G.Preethi, S.R.Tharun Balaji (2019) Urban Design and Spatial layout of Temple and Temple Towns of Tamilnadu-India

International Journal of Innovative Studies in Sciences and Engineering Technology (IJISSET)

<https://www.coursehero.com/file/93399164/CHAPTER-1pdf/>

<https://www.coursehero.com/file/93399164/CHAPTER-2pdf/>

<https://www.coursehero.com/file/93399162/CHAPTER-4pdf/>

<https://www.coursehero.com/file/93399165/CHAPTER-5pdf/>

<https://www.coursehero.com/file/93399165/CHAPTER-6pdf/>

<https://www.coursehero.com/file/93397543/CHAPTER-8pdf/>

<https://www.coursehero.com/file/93397543/CHAPTER-10pdf/>

[www.ishafoundation.org](http://www.ishafoundation.org)

[www.ishafoundation.org](http://www.ishafoundation.org)